

The New ALTO

Spring 2013 Edition



The Best comes
from the Southwest



The New ALTO

Spring 2013 - Hosted by Texas A&M University - Commerce

Contents of this Issue:

Featured Articles

Social Media	3	Alumni	7
Learn how to incorporate social media into your chapter, and the concerns that go along with it.		Discover how important the alumni are to your chapter, and how to affectively utilize their services.	
Hosting	10	Pre-Rush	14
Discover the ins and outs of hosting convention, a district workshop, or district publications.		Follow along in the steps for a successful "Pre-Rush" Rush Process.	

Those Involved:

Phillip Clements

Director of Bands
Sponsor

The 2012 - 2013

New ALTO Committee

Bret Ryan

KKΨ - ZK President

Demi Shipley

TBΣ - EB President

Anthony Abruscato

KKΨ - ZK Webmaster

Megan Banschbach

Tabbatha Brooks

Ivan Calzada

Brandon Fisher

Nico Gonzalez

Miriah McNabb

A Letter from Zeta Kappa and Epsilon Beta

To the Brothers and Sisters of the of the Southwest District,

Your proud hosts of the 2012-2013 New ALTO are the Zeta Kappa chapter of Kappa Kappa Psi and the Epsilon Beta chapter of Tau Beta Sigma from Texas A&M University-Commerce. We continue with our theme of history from last semester. Without the history of these two great organizations we would not be where we are today. History is the basis of what we build these organizations on and how we strive to make a better history for the future. We hope everyone in the Southwest District finishes out their semester strong. Now enjoy the Spring Edition of the New ALTO.

Respectfully submitted,

Bret Ryan
Zeta Kappa President
(2011-2013)

Demi Shipley
Epsilon Beta President
(2012-2013)



Social Media in K Ψ and T Σ : #Perception is #Reality

By Katie Langley – T Σ

University of Arkansas/ Ψ

SWD VP for Membership 2011–2013



During this spring semester, I have presented multiple workshops that have focused on promoting a positive image and encouraging recruitment in Tau Beta Sigma and Kappa Kappa Psi. One of the topics I have discussed in these presentations is the use (mainly the misuse) of social media. After I give a presentation, I often try to get feedback from brothers and sisters to see what they liked and disliked about my presentation. Without fail, almost everyone I talk to greatly appreciates the social media discussion. I frequently hear phrases like, “I need to take that info back to my chapter,” or, “I wish so-and-so were here to hear that one.” It seems clear to me from this feedback (as well as from my own social media newsfeeds) that the use and misuse of social media is a very important topic to discuss in the Southwest District.

When it comes to social media, an important thing to remember is that perception is reality. What your followers and friends see in one 140-character tweet or one shared photo is what they get. There is often no context and no explanation for the reader. For example, if all you saw on Facebook was a sarcastic status clearly making fun of someone and using profanity, what would you think of that person? Would you want to join their fraternity or sorority? Probably not. Now maybe that person has a great, sarcastic sense of humor, and they weren’t be-

ing serious at all. But that isn’t what you, the reader, saw. We must never forget that our words and actions on social media have no context and can easily be misconstrued by the reader.

This is not meant to be an article of “calling out” members of the Southwest District for their tweets and status updates. In fact it is quite the opposite; I want you all to know that I understand how easy it is to update without thinking. Like everyone else, I have bad days too. I miss the bus, I go through heartache, and I get stressed out. When these bad things happen, it’s incredibly tempting to post a quick, angry status to make me feel better. However I have discovered that this feeling of relief is only temporary. Instead this feeling is quickly replaced by guilt at having posted an immature status that does not accurately represent myself or my sisters and brothers.

Though I still find myself tweeting without thinking on occasion, I have tried to find healthier alternatives to expressing my frustration at my bad days. I have learned that sometimes the best thing you can do is to call your mom! Or write in a journal! There’s no need to let the worldwide web see the worst version of yourself just because you had a rough day. You’re so much better than that!

Remember that social media is also a huge part of recruitment in today’s world. Potential new members can Facebook stalk and creep on active

brothers and sisters so easily. So ask yourself this question: If a potential new member who did not know you very well saw your Facebook or your twitter, what would they honestly think of you? What would they think of the letters you’re wearing in your profile picture? These are important questions to remember whenever we are updating our social media. Sometimes even retweeting or sharing someone else’s image or joke can reflect badly upon you and your organization. Remember that your words and actions on

social media reflect upon all of your brothers and sisters across the nation.

As I end this article, I want to issue

each of you a social media challenge as my brothers and sisters in the Southwest District. Next time you go to update your social media, stop and think for a moment. Ask yourself if you are positively representing yourself and your organization. Are you going online to whine and complain? Pause for a moment and remember all the things you have to be thankful for. Try making a status that uplifts and encourages your brothers and sisters instead of misrepresenting them. You might just find that if you start by cleaning out all the negativity in your social media that you’ll be able to clean out some of the negativity in your life too. You can’t lose!

“When it comes to social media, an important thing to remember is that perception is reality.”

#MLITB

Social “Boh”tterflies: After the Meeting

By Courtney Harville and Sabrina Marroqin – KKY

Midwestern State University/ΓΑ



ΓΑ If your chapter is anything like ours here at Midwestern State University, then there is nothing you love more than the opportunity to socialize with your Brothers or Sisters after an evening of business and service. While servicing the band and community is a proud duty to uphold, we also recognize the importance of Brotherhood and bonding. Our chapter has a variety of social events we partake in and enjoy depending on which members organize the event. So after business is finished and it's time to hit the town, here are the 5 social “Boh”tterflies we have noticed within our fraternity:

The Studier: While these members love their brothers, they always have homework or exams to study for. Quite often they plead “I have an 8 am” and leave festivities early in order to hit the books.

The Muncher: Always hungry. Always. These members seem to have an endless appetite and a black hole for a stomach that can never be satisfied. Paired with an uncanny knack for knowing which local food joints are open no matter the time of day or night and the wait time for food, these individuals are the ones to go to for anything food related.

The Workaholic: Some members have selective hearing when the gavel raps to adjourn a meeting. These individuals continue to work and discuss the current happenings of the chapter. Stop. Take a deep breath. Relax. Now go have some fun!

The Gamer: Ultimate Frisbee. Volleyball. COD. Board games. Inside or outside. These members are down for it all when it comes to anything gaming related. Willing to play anytime and

anywhere, these individuals love a good group activity.

The Partier: Do they even have class? Outgoing and never seeming to run out of energy, these members always want to have some fun, even into the wee hours of the night. They will do almost anything as long as it is socializing with their fellow members.

It is every individual personality that makes our Brotherhood unique. When our Brothers get together for a social you know there is some fun to be had, whether it is playing sand volleyball or going to karaoke night at the local grub joint. Creating and encouraging Brotherhood opportunities helps our chapter stay close and relieves the tension and stress of a long, hard day. So which social “Boh”tterfly are you?



Tau Beta Sigma National President's Essay Contest

From Dawn Farmer
National President of Tau Beta Sigma

Our Past, a History Bold; Today's Opportunities We Find Unfolding

In 1000 words or less, describe the opportunities we have unfolding for us as Sisters of Tau Beta Sigma, and how our past plays a role in those events.

Deadline: June 15th to Dawn Farmer, dawn@tbsigma.org

Winner will be announced at National Convention and must be present to win. This challenge is intended for Active members who are currently enrolled in school or will be recent 2013 graduates of their university. The winner will receive \$200 and read the winning entry to the TBS National Delegation during National Convention.

Want the latest news from the National Council? Check out our blog!

Council Connection



4Gr8rBands.blogspot.com



Community Outreach Without Even Trying

By Kaitlin Roll and Autumn Roach - KΚΨ

Henderson State University/ΘΦ

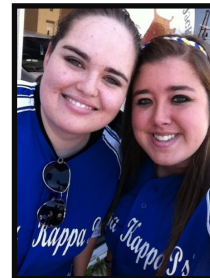
Although Kappa Kappa Psi and Tau Beta Sigma are both organizations that work to serve college band programs, participation in community service projects are a very important aspect of serving the band. To be a successful organization on our own respective campuses, we must have the support of the community to further the promotion of our band programs. When it comes to serving the community, you need to be extremely open-minded. When you become aware of any community outreach opportunities, you need to act on them quickly. Don't just ignore or postpone them, allowing someone else to serve before you even get a chance to consider it. You can't just pick and choose what service projects you would like to do, especially when it comes to community

outreach. As soon as you even think there may be a possibility of serving the community, act on it. This will keep your chapter constantly active throughout the community, without any of those awkward "nothings happening" stages.

The brothers here at Theta Phi at Henderson State University have continued to stress the importance of community outreach. Many find community outreach projects both a burden and an unimportant aspect of Kappa Kappa Psi and Tau Beta Sigma because of its invisibility within our purposes. However, many do not realize that the "community" we serve is the band. Community Outreach is our way of getting support for our service through Kappa Kappa Psi and Tau Beta Sigma. To keep the focus of our service on music and band, Theta Phi has

included music in some way in all of our community service projects. For your chapter, try having a little makeshift band while you take donations for your music department or play some music for the local preschool in your community. Do what you can to become involved.

I challenge every Brother and Sister to make an effort this year to make community outreach a priority. Don't just let it stay in the background of your chapter, but rather bring it to the forefront to help your community in whatever way you can. Just remember, we wouldn't have a band to serve if we didn't live in our community.



The Sisterhood of the Traveling Muumuu

By Meridith Crawford- TBΣ

Texas Christian University/ΒΔ



on campus, it is a fun and unique way to show off our sisterhood.

In the Sisterhood of the Travel-

If you have ever read the book Sisterhood of the Traveling Pants you will understand this tradition that Beta Delta keeps. And while it seems odd, and we definitely get strange looks

ing Pants, these four girls have a strong friendship; 'sisters' as they put it. They buy a pair of blue jeans that they share and send to each other through the summer to help them feel connected while they are apart. Well, Beta Delta can't really find a pair of jeans that will work for every member of our chapter, so we use something a little different- a muumuu. We have brought this muumuu every year to convention; not just because we like it, but it has a story behind it.

One of our past presidents bought a muumuu in Africa and when she came back into the

United States, she decided to wear it on the plane. As fate would have it, her luggage was lost, so she got to walk around in this muumuu in New York City while waiting for her luggage to be found. After that day, she became attached to it and the humor behind it, so she decided she would wear it to every Tau Beta Sigma meeting. Once she graduated, she sent it off to another active explaining that she would like it passed off to other actives each week (just like the jeans in Sisterhood of the Traveling Pants). Unfortunately, when it was opened from being mailed

(Continued on page 6)

(Continued from page 5)

the first time, one of the actives accidentally cut through the muumuu. So, to cover it up, we agreed that every time we received the muumuu, we had to add something. It did not have to be anything big, just something that represents you or something you do not want the chapter to ever forget. Currently, it has every family represented and all of the rush classes since it started along with unique objects that we don't really have an explanation for. This muumuu has everything, from a pirate sword to a tattoo sleeve to a picture of someone's cat: it represents everyone in

some form.

When you get the muumuu for the week, you not only have to add your item, you have to wear it to meeting. While probably even if you just wear a normal purple muumuu around campus, you will probably get a few strange looks. But one that has fairy wings on the back gets you a few more confused looks. No matter though because no one else knows what it signifies. This odd dress-like piece of clothing that is covered in glitter



reminds us of the special bond we have in Tau Beta Sigma. We are all so unique, shown by the item we put on the muumuu and that is what makes this muumuu special. That is what makes this sorority special: we all come together on one common love for band. It might seem odd to many people: a band sorority, but we know that it is so much more than that. It is all these little pieces that make it the greatest sisterhood we can ever be a part of.



Andy the Armadillo

From The Theta Phi Chapter of Kappa Kappa Psi
At Henderson State University



Dear Brothers of the Southwest District of Kappa Kappa Psi,

Since being given to the Theta Phi chapter at Henderson State University, I have embarked upon many excursions. This spring semester, I had the honor to sit in and watch the membership candidates from the Theta Phi Chapter go through their first and second de-

gree. While here at Henderson, I have had the great pleasure of hanging out with my sister, Beta the Turtle, and the Theta Phi Chapter Mascot Goat. Going through the semester, I had an amazing time hanging out with my brothers and the brothers of Sigma Chi Chapter of Phi Mu Alpha in their Annual Root Beer Chug; and of course we took home the winning trophy. As we all know, serving the band is what we strive to do, but we also need to do our parts in serving the community. I had the pleasure of going to Little Rock, Arkansas with a local church going family who gives back by help feeding the homeless. I also had the experience working with the rest of Henderson State University students in serving their community in Reddie to Serve Day. Also this semester, I traveled to Oklahoma (OSU)

and UCA in Conway, Arkansas to participate in our workshops through the SWD. Later on today, I will take part in celebrating the 25th year of the Theta Phi Charter Day, and in memory of this day, we will bury a time capsule with letters in it for others to open it back up 25 years from now. Today is also a special day because I will get to watch the new membership candidates cross into our brotherhood. This semester has been a blast, and I am super excited for the upcoming year.

Fraternally Submitted,

Andy the Armadillo

Utilizing Your Alumni

By Brandon Fisher – KKY

Texas A&M University – Commerce/ZK



Think of yourself ten years in the future. You have a new life that is away from college, hopefully. You have a job. Maybe you have a spouse, and even possibly kids. The point is you will be living a completely different life than the life that you are living now, but no matter what, at the mention of Kappa Kappa Psi or Tau Beta Sigma you will respond in a very similar way at any point in your life.

In last semester's New ALTO article titled "Finding Your Roots," I discussed the importance of getting in contact with as many alumni and honorary members as possible and really trying to build up a database for your chapter. Our alumni can be one of the most important aspects to our organization. After all, we wouldn't have an organization at all if it weren't for the alumni that took the necessary steps in making their dreams become realities. The majority of your alumni are going to be willing to bend over backwards in order to contribute to the Chapter in any means, and it is important for you to realize how exactly you can utilize your alumni.

One of the first things you need to do is reach out to your alumni. This can be done in a variety of way such as a Facebook group, a Facebook "like" page, a Chapter website, and a newsletter that is sent out at least once a semester. This helps the alumni to be up to date with the Chapter's busi-

ness, and also for them to feel involved. When alumni are involved, they are going to feel much more prone to contributing in multiple ways.

A very obvious way for alumni to contribute is through donations. This is not an aspect that you should focus on or push for, but it can be very beneficial. The easier it is for alumni to make a donation, than the more likely they will be to do so. I suggest opening up a PayPal account and making it available through your Chapter website and Facebook. In any newsletter that goes to alumni it would be wise to also include a mail back envelope and option for donations. This alone can bring remarkable results to your Chapter. The Zeta Kappa Chapter received approximately \$2,500 in donations from alumni during the fall semester alone because we presented our alumni with a goal that we had and they responded very well.

Although money is an obvious contribution, it is hardly the highest of the rewards that alumni can bring. The alumni can be used as your unofficial history book. If there are certain traditions that your Chapter isn't sure why they participate in anymore, or where they originated, then call upon your alumni for answers. They can offer a great amount of perspective that will help you decided if you need to reevaluate the tradition in order to place it back to its original concept, or even make you decide that it is not a necessary tradition anymore.

Through the use of alumni our Chapter has been able to find explanations on why we had certain honorary members. It is always interesting to

know the contributions that certain honorary members gave to the Chapter in order to earn such a prestige honor. In this year's membership process we were able to bring back traditions that we haven't participated in for many years because they had been lost.

This communication can also be reached out from alumni to perspective members. The alumni find this to be a great honor and take a high amount of pride in being able to talk to them. We had a visit from one of our Charter Members before one of their tests, and we were also able to Skype our Alpha Class President before their final tests. They were able to provide insight to the prospective members that honestly cannot be reached from any other individual. This was a rare opportunity, and you could tell by the faces of the prospective members that they took the entire experience to heart.

Other alumni can have a significant impact on prospective members as well. I reached out to our alumni throughout this semester and offered them the opportunity to write letters to the prospective members about why they chose to join, how their time in the Chapter was, how it impacted their life after college, and anything else they would like to include. We had a nice turnout and they were able to add many letters in their books from alumni including three charter members and the first girl to join our chapter. We have found that this was a great way not only to include the alumni on our current activities, but also to provide a history lesson for the prospective mem-

(Continued on page 8)

(Continued from page 7)

bers.

A lot of alumni will respond by sending artifacts to the Chapter, such as their membership book, that they have held on to and do not have any use for anymore. It is also good to use at least one event a year to attract alumni. On any year that there is not a separate reunion taking place, third degree is the best option to have alumni attend. Imagine yourself as a

prospective member again, and as you are taking part in third degree there are many new faces that you haven't seen before including honorary members, charter members, and other alumni. This really raises the level of importance that can be felt in the room and makes it a more memorable experience for all involved.

It is very important to realize how significant your alumni are to your existence. Anytime you are able to include them in anything chapter relat-

ed, they truly feel welcome into the Brotherhood or Sisterhood again, which can be a very good feeling. With that being said, the most important thing you can do now is remember what it was like to get the assistance from alumni. Do what you can to keep this in mind throughout the years so that when your time comes, you too can do your part to contribute to a group of individuals that are united for a common goal: to serve the band.



Talking to Myself: Making the Most of Your Time in The Bond

By Kira Roth – TBΣ
University of Oklahoma/Δ

As a senior member of the Delta Chapter of Tau Beta Sigma, I feel like I've learned a few things. I've learned that Sisterhood Retreats that involve launching lanterns (Tangled-style) makes for a memorable night, that brothers can be won over by a smile and the promise of [insert sweet, baked item here], that your sisters are always there no matter the numbers on the scoreboard, and that there is nothing like being a sis-tau.

I started out writing this article about our membership here at Delta. I was constantly blocked by both my inability to write and the fact that there truly are no words that can describe what it means to be a sister here (or anywhere for that matter). Maybe it's just the grey hairs on my head (figurative, I swear), or the number of "lasts" I have started to accumulate rapidly over the last few months, but all I could think of were the good times here at the University of Oklahoma and how dreadful my life would have been without every single one of my sisters. All I could think of was what I

would have done differently if I were given the chance. So, I decided to try something here that I have never before seen published on the New ALTO...or I may have just missed it; that is a possibility. I decided to write myself a letter and hope that you will gain some wisdom from it as I have gained wisdom from my own experiences. I believe my experiences and the words written here are universal for sisters in the bond and hope that through this little letter I will help you grow into better love of the sisterhood. So here goes:

Dear Kira from Spring 2010,

Hey! It's you from the future! I'm sorry I'm ruining the surprise, but the Mayans were wrong and we did make it to 2013. Start stocking up on Twinkies now (just trust me), hit the treadmill, and listen to what I have to say.

This journey you are just starting out on will change your world forever. You will have your disappointments, joys, losses, and triumphs, we all do. The difference is you will have your sisters and even your brothers to help you along the way and you

will create bonds with the most fantastic people you will ever know. You will make it through all of your MC requirements and will even throw one of the best MC parties ever!

You will eventually find out what "MOTS" stands for, and will never find out what "AEA" means (don't even try). You will eventually smuggle Bouga* away from the brothers and will live to tell the tale. You will be asked to give more of yourself than was ever thought possible and still find the strength to give even more. You will cry, laugh, and grow more than you ever knew you could. *Ask a Delta Brother or Sister

This is my advice to you little Kira (well, and to you, dear reader) as you continue on this fantastic, sometimes unexpected, path known as sisterhood:

-Never turn down an opportunity

(Continued on page 9)



(Continued from page 8)

to be there for a sister. Your sisters will face true crises and you will have to make a decision to think of yourself first or to be there for them. Pick them, every time.

-Listen to what is said in rituals. The words are beautiful and they were written for every sister that has come before and for every one that will come after. They are meant for you.

-The Brothers of the Delta Chapter of Kappa Kappa Psi are the best people you could ever ask for. Even though they can be loud and they like dodgeball a little too much, they will be there for a sister at the drop of a

hat. The love that we share as Brothers and Sisters is unique to our chapters. Celebrate it. (If you are reading this and don't have another chapter on your campus or aren't having the best joint relations right now, to get to know the other chapters around your university or try and rekindle your bonds as brothers and sisters. We should strive to be united and to build each other up.)

-Talk to the alumni. You will be one yourself one day, whether you want to be or not. The wisdom that they have is invaluable. They have been there before and they know what you're going through. There is no reason that they should ever feel ignored or unwelcomed in our

chapter room. Remember that they are a sister forever.

-Love your sisters unconditional. Do not allow your judgment to be clouded by the feelings of a moment. The drama that is so important today is not even a memory tomorrow. Your sisters and you are here for a purpose. Live for that higher calling and do not squabble in the details.

-Remember why you joined, even though you don't keep a journal, you need to write down that reason the minute you step into the sisterhood. It will help keep you accountable despite the challenges you may face.

-Remember every moment, for time truly goes by too fast.

This is your adventure. Jump in.



Recruiting New Members

By Vanessa Delgado- KKΨ

Southwestern Oklahoma University/EE

Southwest District Co-Member-at-Large

The start of a new semester brings upon another challenge within organizations: recruiting new members. Depending on how you handle the task, it can either go in a smooth or bumpy direction. With the help of your membership educator and active members within your chapter, you can set sail to a smooth path for the semester. First, your chapter should hold a meeting discussing potential members and the qualities in which you are looking for. It may seem like an obvious discussion but once you get down to the nitty gritty, it may not all come to who your friends are but who truly has the passion to serve the bands at your school. After this discussion, your chapter will have a better idea on what and who you are looking to recruit. It is important to make sure that all members of your chapter are on board the recruiting train. While some may think it is only the

membership educator's job to recruit, it actually comes down to all members to recruit potential members. Talking and going out of your way to discuss your organization to other people may seem frightening at first but taking the time to personally discuss your organization can spark interest in the potential members.

Of course, besides just talking to other people, you can also hold functions and events to show people what you are about and how your chapter functions together. Hosting dinners or fun activities that involve other people, not just members, can get the ball rolling. Potential members want to feel involved and not just be another face in the crowd. You need to push for people to come out of their shells and interact with the active members; otherwise they may be missing out on a great opportunity. Another activity to

try is a service project. People who may be interested in your organization need to know what you are about and that is serving bands. It gives hands on experience to potential members and you can also make it enjoyable by hosting a dinner afterwards to show your thanks for their hard work.

It is imperative that during your recruiting process, you do not force your organization and its beliefs onto a potential member. Take things slow and be relaxed about the situation. Also, have fun with it! Try to be friends with your potential members first and get to know them on a personal level. They will feel good about your efforts and be more willing to respond to your recruitment strategies. No one likes a pushy person; a friendly and inviting person will definitely make the potential members feel at ease.



Ain't Nothin' to It But to Do It: Hosting District Events and Publications

By Erika L. Pope - TBΣ

Henderson State University/ΘΘ

Southwest District Counselor



“A i n ’ t nothin’ to it, but to do it,” is not just the use of slang at its best, it is also a state of mind and

in this reference, a challenge that I would like to charge all of you with. When it comes to hosting events within our district, there have been a couple of myths that have been brought up on why chapters don’t bid for things. However, if you are from a chapter that has shown even the smallest interest in taking on the many great district event hosting opportunities, then I am especially talking to you. The following are a few commonly heard myths about hosting district events.

“Only large schools can host Southwest District Convention.” – *Not true! As the saying goes, it’s not the size; it’s what you do with it! While having convention on large campuses is accommodating for the size of our convention, it isn’t a necessity. The main thing to keep in mind if you are interested in hosting convention is to be sure that wherever we have it needs to have the facilities to fit 1000 or more people. Chapters from universities with smaller campuses unable to withstand the volume of attendance our convention brings in, should consider hosting SWD Convention at a convention center or hotel convention center that is near your campus. It can and has been done!

“If we host an area workshop/convention, it will tear our chapter(s) apart.” –This is only a partial myth. If your chapter suddenly explodes after hosting a district event, then

chances are the problems were there before you hosted. It’s an even better chance that chapters having problems aren’t going to want to host an event to begin with. Hosting a district event can be quite daunting and it should never be said that taking on a task like this is going to be a walk in the park, however, with the proper planning, your event will be successful and your chapters will stay in tact in the aftermath. A good way to accomplish this is to abide by one simple statement once the convention has wrapped up: move

“Every chapter that wants to host Southwest District convention or produce *The New Alto* has an equal chance to present their bid.”

on with life! Enjoy the memories you’ve created by hosting, but return your chapter to “business as usual.”

“Hosting an event is all work for us, with no benefits.” – Wrong again! Yes, you are going to be working for your brothers and sisters in the district, but hosting a district event/publication should be viewed as a way to show off your school, your chapter and your band program! This is a chance for your chapters to let other schools know why you love being a member of “The Showband of Arkansas,” “The Long Horn Marching Band,” “The Bobcat Marching Band,” “The Demon Marching Band,” or “The Pride of Oklahoma!”

“We want to host, but the _____ chapters are bidding (or bidding again), so they’ll probably get it.” If these are thoughts that as a chapter you all have had, just remember the story of *Everybody, Somebody,*

Anybody and Nobody:

This is a little story about Everybody, Somebody, Anybody and Nobody.

There was an important job to be done and Everybody was sure that Somebody would do it.

Anybody could have done it, but Nobody did it.

Somebody got angry about that because it was Everybody’s job.

Everybody thought that Anybody could do it but Nobody realized that Everybody wouldn’t do it.

It ended up that everybody blamed Somebody when Nobody did what Anybody could have done.

Every chapter that wants to host Southwest District convention or produce *The New Alto* has an equal chance to present their bid. It’s all about what your chapter has to offer when bidding. Ask the following questions when putting together your bid: Do we have the resources to pull this off? Do we have permission from our music department and the university? How can we take this project and make it something that the members of our district will benefit from? How can we take this project and make it our own? Why not us?

So if your chapter is in the slightest way interested in taking on hosting something for the Southwest District, contact your District Governor or District Counselor because we are here to help and...“Ain’t Nothin’ to it but to do it!”



Technology in the Chapter

By Helen Moore - KKΨ

Southeastern Oklahoma State University/EN
Southwest District Secretary/Treasurer



As an active member of the Eta Nu chapter for almost three years, I have seen many ways in which my chapter, the district, and even the fraternity have tried to incorporate technology into the scope of our being. For the most part, I have seen tremendous success, but I have also seen epic failures. With anything, technology comes with a price. My chapter uses an array of technology. Dropbox, which is for sharing documents, is what we use to hold all of our documents, pictures, and other items. It's great in that everything is in one location and everyone who has access to the folder can get ahold of everything at a click of a mouse, but there could come a day when too many people who have left the chapter have access or the site/software crashes. At that instant, we could lose every single piece of documentation and would have to start all over. You also have the issue of people reading/not reading the minutes. Unfortunately, even with them being that easy to look over, there are plenty of members who don't, forget what was passed and bring it up again in the next meeting. It can definitely be a pain and you lose valuable chapter meeting time. We still text just to remind people of meeting times and locations, call-times for events, or just to let everyone know a committee is not meeting but

even that can get construed. Granted, it's a really quick way to get information to people fast but a member might say the wrong information, people start chatting back and for which leads to everyone getting EVERY SINGLE MESSAGE, or the information get sent to the wrong person. Unfortunately, we've all had this happen at least once. And, let's not forget Facebook! We all have one and it's another super-fast way to get information out, but once again problems can ensue. Everyone starts commenting on the post and cause confusion and disruption or no one comments when you've asked. Again, this can be a problem and you always have those few who don't check Facebook every 5 seconds and don't receive the last minute changes. With all these in mind I thought up some tips to insure that the technology in your chapter is more beneficial than problematic.

1. Consider purchasing an external hard drive for the chapter so that all the digital documents are on one item and it just gets passed down to the officer that deals with those type of documents. My chapter has one and it works wonders.
2. Create groups on your phone for messages that are specific to certain people. Committee chairs...this is a great idea to get meeting times and reminders out. Executive council, have a group for just chapter members and designate one officer to remind people of super important information

in a dash. Also, ask your chapter to respond to the officer who sent out the text separately, if they have a concern or question, so that the conversation doesn't get spread between 20 people.

3. Create a 24 hour grace period for people to respond or check the statuses (You can a lot more or less time if needed). If the time's up, tag them in a comment. If this still doesn't work, send them out a friendly reminder through text or face-to-face. This way you know all

"I have seen many ways in which my chapter, the district, and even the fraternity have tried to incorporate technology into the scope of our being."

the information got to everyone and you get more responses from your chapter.

4. Hopefully these are helpful tips that each chapter can use. Use technology to your advantage but please realize the risks and the detriments involved. If you have any other tips, any questions, or concerns, please feel free to contact me or any district officer!

Always strive for the highest



The MC Process: From the “Inside”

By the Zeta Delta MC Class of the Delta Chapter—KKΨ
University of Oklahoma/Δ



The brothers of the Zeta Delta membership candidate class at the University of Oklahoma (Delta) have had an interesting experience with the pledge process for Kappa Kappa Psi. We would like to share our thoughts and share our journey from the perspective of a group of brothers yet to be initiated.

We entered a group of band members, nineteen strong - dedicated leaders representing bands from around the nation, some Oklahoma natives, some from Texas, and others hailing from as far as Iowa and Georgia. We sought a place among the most committed of the bands - among the fraternal order of Kappa Kappa Psi. We didn't know exactly what awaited us, but we knew from what we had seen during rush events and during our time in the Pride of Oklahoma that the journey ahead would be of great value.

We met for the first time on a Sunday evening, strangers with a common conviction. Knowing nothing about each other, some of the group had thoughts of doubt and uncertainty. But the seeds of brotherhood had been sown. The only thing left was to

cultivate them.

Our first quiz required us to know each of our Zeta Delta brothers by name and instrument. Throughout the week, as we got together to study and goof off, we came to know that we had made the right decision.

A few enlightening and exciting Sunday nights concerning the history of the fraternity culminated to the night of our first degree. Despite some initial nerves, discovering the identity of our big brothers left us all feeling amiable. This night marked a huge milestone in our college lives as we confirmed our intentions and ensured the soundness of our commitment.

By this point we had grown to know each other well enough we were willing to trust each other with our very lives. One night, a dense fog straight out of a horror movie descended upon Norman, reducing visibility to almost zero. “Fog Boomer, anyone?” suggested one brother in our Facebook group, clearly as a joke. Yet we ventured forth into the mist, instruments in hand, playing our school's pep tunes. Anyone walking through campus that night would have heard the legacy of Zeta Delta - the legendary Fog Boomer.

No great story is without a low point, however. For various rea-

sons, a few membership candidates were unable to complete their journey to active brotherhood. Shaken as we were, those of us that remained only grew stronger in spirit and connectedness. We continued to grow as friends and brothers, eventually reaching the ritual of the second degree. By this point, we could all sense the strengthening feeling of brotherhood, permanently intertwining us in ways we previously would not have understood. But we were not yet ready to be called active members of Kappa Kappa Psi. There was still much to learn and understand before officially joining the ranks of the fraternity.

The journey is not yet over. In fact, it's barely begun. Though we will be active members before the publication of this article, we know that the MC process was only the first step. Years of fun and service to the band, university, and community still lie on the road ahead. The brotherhood can only get stronger. And we, the brothers of the Zeta Delta rush class of Delta chapter, could not be more excited.



The History of Theta Phi

Respectfully Submitted by the Theta Phi Chapter of Kappa Kappa Psi
Henderson State University

The Theta Phi Chapter of Kappa Kappa Psi was founded March 8, 1988 at Henderson State University in Arkadelphia, AR. We have kept it classy for 25 years at HSU and plan to continue our many traditions our brothers have set

before us. Everything from our annual Brotherhood Night in the woods to our regular Root Beer Chugs with Phi Mu Alpha has still remained part of our culture here at Theta Phi. One of our favorite traditions is our Miss

KPsi pageant where many of our male brothers dress in drag to put on a very classy pageant of wonderful “women.” We plan to continue all of these, among many others, in the years to come.



The History of Beta Delta

Respectively Submitted by the Beta Delta Chapter of Tau Beta Sigma
Texas Christian University

Beta Delta has a tradition that began in 2000 where we dropped the classic Greek letters for each rush class. Since 2000 we have named our Rush classes after something popular

in society. We have had a Muppets, M&Ms, Scoobies, Charlies Angels, and even Phantom of the Opera Class. Currently we have the Pirates, Lucky Charms, Incredibles, and Tributes. This

tradition keeps from away the original Greek letters to add to the personality of the incoming class!



Tau Beta Sigma Call for Nominations

Submitted by Dawn Farmer
National President of Tau Beta Sigma

**Tau Beta Sigma National Honorary Band Sorority
National Council & Board of Trustees Positions**

**Interested & Qualified Candidates may submit their application to the National President & National Headquarters
Deadline May 1, 2013**

National Council

Interested individuals running for the National Council should meet the following basic qualifications:

Member of the Sorority in good standing and at least 25 years of age.

Life Member of Tau Beta Sigma.

Completed an undergraduate degree program.

Shall possess outstanding business ability and be able to represent the Sorority under all ordinary conditions.

Able to serve a two-year term once elected.

Interview with Nominations Committee at National Convention

More info of this process can be found in 3.203, 3.204 & 3.205 in The National Constitution

<http://www.kkytbs.org/forms/TBSCConstitution.pdf>

Board of Trustees

Interested individuals running for the Board of Trustees should meet the following basic qualifications:

Member of the Sorority in good standing and at least 30 years of age.

Shall possess outstanding business or professional ability and shall be capable representing the corporation and Sorority under all circumstances.

Interview with the National Council (Nominations Committee for Board of Trustees)

More info of this process can be found in 2.105, 2.106 & 2.107 in The National Constitution

<http://www.kkytbs.org/forms/TBSCConstitution.pdf>

Interested Individuals May Submit Their Information No Later Than May 1, 2013

Materials Requested:

Letter of intent which identifies the position being sought, why it is being sought, what contributions you can make in that office, and information detailing how you meet the above basic qualifications. Highlight band and sorority experience. Limit: 1 page.

Résumé/Vita, inclusive of both Sorority and professional experiences. Limit: one 2-page document or two 1-page documents that separate the two categories.

Three letters of recommendation, one of which should be within the applicant's profession.

One photograph, suitable for publication.

Questions may be addressed to National President: Dawn Farmer dawn@tbsigma.org

Submit Applications to the National President through e-mail at dawn@tbsigma.org

**or to National Headquarters via the postal service at
National Headquarters, PO Box 849, Stillwater, OK 74076**

attn: Tau Beta Sigma Nominations

Deadline: May 1, 2013

Tips on "Pre-Rush" Rushing

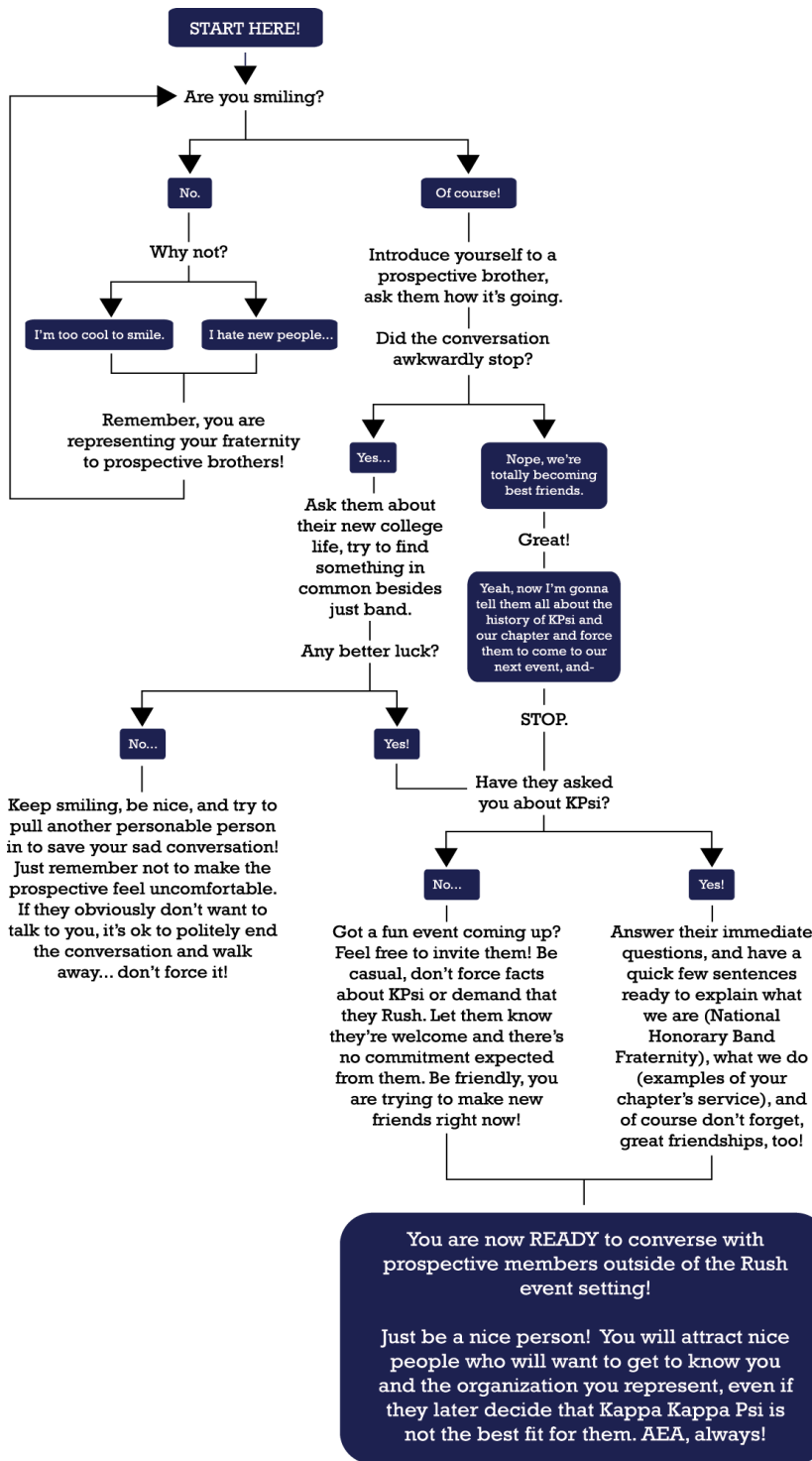
By Jillian Taylor KKY

University of Oklahoma/Δ



Okay. Let's be honest.

Talking to prospective brothers at organized Rush events can be much easier than those awkward, "first week of band and I just met 100 new freshmen, so what are you majoring in?" conversations. At least at a Rush event, you already know they're interested in KPsi. So just how CAN you represent and advertise your chapter well to a prospective brother BEFORE they even attend a Rush event? Bros, it's easy, and I've got your back.





Community Involvement, Role Models for Future Students

By Jaclyn C. Smith - TBΣ

Texas Tech University/B
Southwest Vice President of Special Projects

Take a moment to remember the reason why you joined Band. Perhaps it was because a family member encouraged you, such as your parents or siblings. Maybe your school forced you to participate. Or you might have always known that you were destined to play an instrument. But the more important question is, *why did you stay?* Who made band more enjoyable, was it your friends? Did you have someone to look up to – such as a director, or maybe a private lesson teacher?

Many of us had role models when we were younger musicians. Someone in the band, or a teacher to look up to and think, 'I want to be like them someday.' Great role models are critical to encouraging students to continue in their music education. As members of Kappa Kappa Psi and Tau Beta Sigma, it is our responsibility to serve our colligate bands, communities and to also encourage future musicians to keep these programs alive and thriving for years to come.

There are tons of ways to get involved with your community through the power of music! To get involved with younger students such as elementary age to beginner students, seek out local elementary schools, after school programs, and YMCA programs to plan a time to interact with potential music students. There are tons of activities you can do with

younger kids to get them excited about Band! One idea, is the classic 'Instrument Petting Zoo,' where older musicians-like us-bring our instruments and set up in stations allowing the younger students to visit each station and learn about the instrument. Playing tunes that kids will recognize can spark interest. Want to get more festive? Visit elementary schools and play Christmas carols going classroom to classroom!

For sparking continued interest in intermediate musicians and middle school aged students, private music tutoring is another great idea. At this age, most students are learning about the art of music and might get frustrated or upset when learning an instrument appears to be harder than it seems. Sometimes, these kids learn a lot better from younger role models teaching, rather than their everyday teachers. Learning from the perspective of someone who more recently learned how to play, can relate better to a student than adult who might have been around for decades. Ask to play along side students during a song at a concert! Or invite the band to perform in a conjoined concert at your university!

For advance musicians, such as high school students we can get even more involved! These students have now transitioned into marching band as well as concert bands and we

can expand our activities accordingly. To get involved with local high school marching bands, offer to come out to schools to help as a temporary marching tech. Want to have more fun on a Friday night? Travel out to local high schools and play along side the marching bands in the stands. Spread out among the band and join in on the Friday night-lights! After half time, go and visit the opposing high school team, and play along side them if allowed. Doing these activities isn't just promoting music, but is also recruitment for your university and our organizations as well.

There are tons of ways to get involved with your community and local music programs. Try inviting local band programs to participate in service projects conducted by your local chapters of Kappa Kappa Psi and Tau Beta Sigma. Invite younger musicians to help collect can goods for food drives, or invite members to participate in habitat for humanity if applicable. Remember to be creative in ways to encourage band members to remain in band, while at the same time serving your community. Have more ideas to share about community involvement, or involvement with local band programs? Contact you Southwest District officers to pass along good ideas to other institutions!



A Message for ZK and EB

We would like to thank you for allowing us the honor and privilege of hosting The New ALTO for the 2012–2013 year. While we can't say it has been easy, it has definitely been a fulfilling challenge for our chapters. As we leave you with the final issue of

this year, we look forward to the opportunities that will present themselves as we serve as the host chapters for the 2013-2014 year. We hope to carry on the long tradition of excellence that the Southwest District is known for, and strive to do our best in

these endeavors.

As this year's theme is history, remember that the most important history is the history that you and your chapters are going to make, both in the near and not so near futures.

From the Brothers and Sisters of
Zeta Kappa and Epsilon Beta



Have a Great Summer
AEA and MLITB