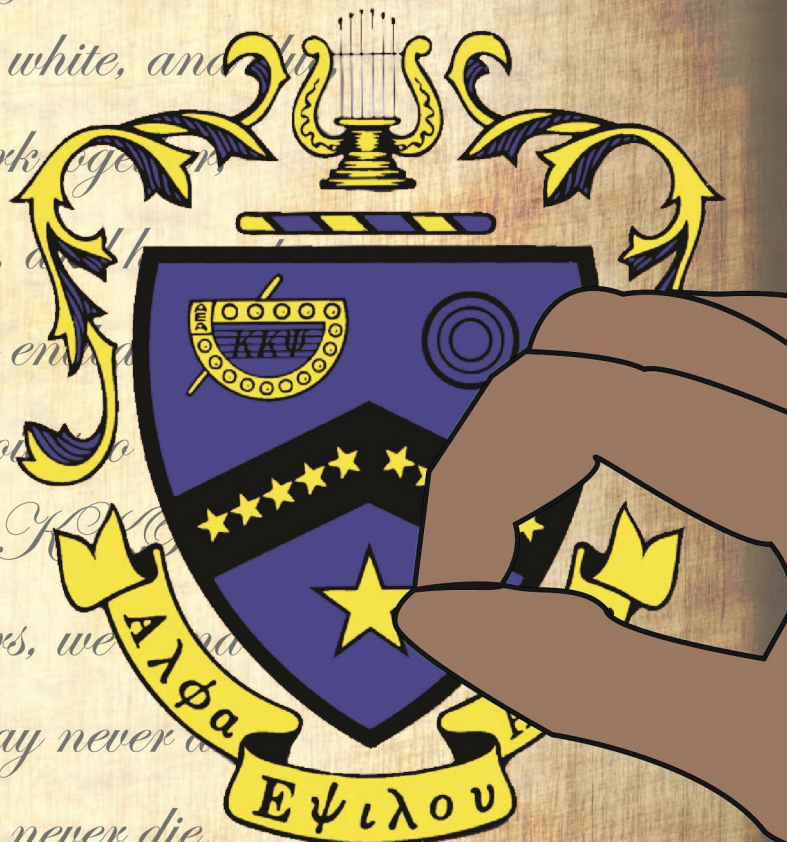
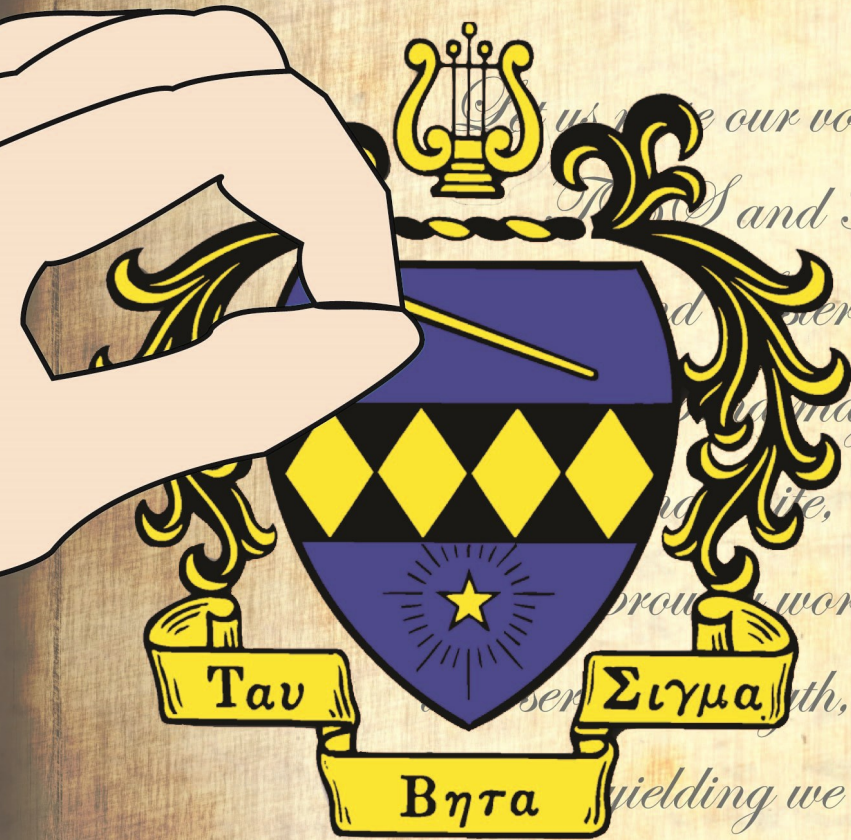


THE NEW ALTO

Spring
2014



*Let us raise our voices to the bond
of TBΣ and KΚΨι
Brothers and Sisters, we stand as one
that the bond may never die.
the bond may never die.*

Building Better Bonds



The New ALTO

Spring 2014 - Hosted by Texas A&M University - Commerce

What's Inside:

Featured Articles

Don't Forget the Arts 3	Friends Vs Brothers. 10
An interesting article by the President of Texas A&M University - Commerce, Dr. Jones, over the extreme importance of the arts in various factions of life.	An article from Brandon Fisher, the president of the Zeta Kappa Chapter of Kappa Kappa Psi, about the true difference between a friend and a Brother.
Chapter to #NatCon2015. 14	"I See Band People" 26
An article full of great tips on how to get your chapter members to National Convention by the Tau Beta Sigma SWD President, Heather McGowan.	An exciting story of the bonds that can be formed outside your own chapter and what Erika Pope learned from being the Tau Beta Sigma SWD Counselor.

Staff:

Phillip Clements
Director of Bands
Sponsor

Dr. David Scott
Department Head

The 2013 - 2014
New ALTO Committee

Brandon Fisher
KKΨ - ZK President

Jessa Martinez
TBΣ - EB President

Lindsey Sanders
KKΨ - ZK Historian

Jessica Boren
Pablo Nunez
Jordan Hayes
Seth Thomas
Anthony Abruscato

From the Chapter Presidents

Brothers and Sisters of the of the Southwest District,

The Zeta Kappa Chapter of Kappa Kappa Psi and the Epsilon Beta Chapter of Tau Beta Sigma from Texas A&M University - Commerce are proud to host the 2013-2014 issue of the New ALTO. We are excited to be a part of this special project not only because it is our second consecutive year, but also because it will be the last year that any college or university joint Chapters will be able to serve as hosts. The theme this year is "Building Better Bonds" and this issue will consist of articles that focus more on the relationships outside of Kappa Kappa Psi and Tau Beta Sigma. Our chapters of Zeta Kappa and Epsilon Beta, as well as other chapters, know how important it is to work as a unit in serving our bands; no job can be too small or too big, but it is also important to realize the benefit of working and creating bonds outside of our two organizations. Thank you for your continued service and all that you do. We hope you enjoy the spring 2014 edition of the New ALTO, and have a great rest of the year!

AEA and ITB,

Brandon Fisher - KKΨ
Zeta Kappa President
(2013-2014)

Jessa Martinez - TBΣ
Epsilon Beta President
(2013-2014)



Don't Forget the Arts

By: Dr. Dan R. Jones – $\text{KK}\Psi$ Honorary
Texas A&M University – Commerce / Zeta Kappa Chapter
University President



Few would disagree that the arts are an integral element of human experience. There exists within each of us the urge to create, an urge that is expressed in a multitude of ways. The earliest traces of human civilization are found in intricate artistic creations – figures drawn on the walls of caves, bodily adornments, and delicately carved representations of deities. Even the most utilitarian of ancient objects, such as weapons, agricultural implements, and household objects, are often crafted with elaborately contrived aesthetic features. Earthenware jugs display gently curving lines that add no utilitarian value, and in fact, no doubt presented technical challenges for the creator. These enhancements did not make the vessels more durable; it did not increase their capacity, nor did it make them easier to

handle. It simply made them pleasing to those who made and used them.

In fact, the history of human civilization is told largely in terms of the distinctive artistic creations produced at particular times and places. Ancient Greece and Rome are renowned for their unique contributions to vast eras of human endeavor, including drama, philosophy, architecture, political science, sculpture, and design. It is a truism that all of Western philosophy consists of a series of footnotes to Plato. The physical remnants of these cultures are always on the “must-see” list for travelers to modern-day Greece and Italy. Journeying further back in time, closer to the beginnings of recorded history, are some of the most magnificent structures ever to be designed and built by human hand: the vast funerary remains of Giza, which include the pyramids and the Sphinx. These incredible creations

are the product of a time when art, religion, design, and technology were inseparably linked, and tens of thousands of workers joined together to toil on construction projects that spanned decades. Living as we do at a time when the most simple of common tasks is confounded by political and ideological schisms, it is difficult, if not impossible, to imagine a cul-

ture characterized by such unity of thought, belief, and action, conjoined to accomplish a singular, mighty task.

Artistic creations bespeak all of these qualities of culture. They represent unity and conflict; sorrow and joy; clarity and chaos; hope and hopelessness – and all points in between. The arts are what endure of a civilization when all of its other accomplishments fade away, as all inevitably do.

The evolution of the arts in America traces a distinctive curve. For the two hundred or so years of the nation’s existence prior to its independence, artistic expression was largely shaped by two influences: religion and utility. As did their European forebears, Americans found the occasion for creative expression in religious belief. Although they had neither the technology nor the materials readily at hand to erect vast cathedrals, Americans looked to God for instruction on how to organize their collective efforts and identity, how to mold and educate their children, and how to regulate behavior and commerce. In the famous words of John Winthrop, America was to become the modern-day embodiment of the “shining city on the hill,” the “new Jerusalem” where God’s grace would find frequent and fervent expression in the

Artistic creations bespeak all of these qualities of culture.



Don't Forget the Arts

Continued...

lives of people. As in ancient Egypt, art and belief were inseparable.

Following the war for independence, Americans dedicated themselves to the creation of truly distinctive, truly American, truly democratic art forms. Ralph Waldo Emerson's 1842 essay, "The American Scholar," is considered America's intellectual declaration of independence, calling as it does for the casting aside of European forms and techniques in favor of a literature that truly bespeaks the American experience. To Emerson, the nation could not truly assume its rightful place among the community of nations, as Thomas Jefferson had envisioned, until it conveyed its birthright in the form of uniquely American art.

What followed was a veritable explosion of creative production. Herman Melville, Walt Whitman, Mark Twain, and a host of others wrote magnificent essays, poems, and novels which had meaning only in America. The momentum continued throughout the twentieth century with such writers as Fitzgerald, Hemingway, Mailer, Heller – and so on. Distinctly American music found expression in the works of such composers as Aaron Copeland; sculpture, painting, photography, and drama all display similar narratives.

Which leads to the central question of this essay: when art of all varieties has played such a foundational role in the evolution of American civilization – indeed, of all civilizations – why does it now struggle? In particular, why does it struggle to be included as a prominent element of a well-rounded, comprehensive education?

I will not dwell at length on the first, broader question, of why art faces monumental challenges in society at large, other than to speculate that economic and political forces have conspired to diminish art's place in American society. As an economic enterprise, art is seldom seen as a for-profit venture, at least for most (not all) artists – although much money is indeed made in the world of art. During times of fiscal restraint, public support for the arts is often the first thing to be cut. The City of Detroit may have to sell off pieces from its art collection, long considered one of the most extraordinary public collections in the nation, in order to fulfill pension obligations to its retirees. Asking a retired garbage collector to forego his pension so that the city can retain possession of a prized Picasso is perhaps unreasonable.

As for politics, the current wave of hysteria against "big government" extends to the arts as well as other forms of

governmental presence in our lives. The Corporation for Public Broadcasting, which includes the broadcast of artistic performances among its product line, has for some years been threatened with budget cuts by a faction in Congress who believes the government has no legitimate role to play in such matters. Funding for the National Endowment for the Arts peaked in 1992, and has fallen by 17 percent since then. In 2011, a group called the Republic Study Committee called for eliminating federal support for arts and humanities programs altogether, an effort which, if successful, would have done away with both the National Endowment for the Humanities and the National Endowment for the Arts.

These positions are not going away; in fact, given the inflammatory rhetoric of the Far Right, they are likely to grow ever more strident. But my purpose here is not to mount a rebuttal to these political stances, but rather to deal with the question of whether arts education is getting its proper due in our public schools and institutions of higher education.

Of course, the two questions cannot really be extricated from one another; policy decisions relating to public education always have a strong political dimension. Still, let us limit



Don't Forget the Arts

Continued...

ourselves to considering these two questions:

Can a nation which finds its position of global dominance in technology-driven innovation afford to continue making significant investments in arts education when our deficiencies in math and science education are so troubling?

In an era in which the rising cost of education at all levels threatens to restrict access to high-quality educational opportunity only to the affluent, is it fair to require cash-strapped students to take – and pay for – courses in the arts which many believe do not enhance their marketable job skills?

The answer to the first question is a resounding “yes.” Arts education does matter; it is not simply an optional enhancement to a school’s “real-world” curriculum, i.e., its offerings in math and science. While we have become quite expert in segmenting human knowledge into discreet disciplinary silos, the human mind does not work this way. When tackling problems, the mind ranges freely. Thinking is fluid; the neural associations that lead to discovery and creation are triggered in myriad and mysterious ways. Some follow the lines traced by reason and logic. However, others – those we would view as most creative – are also guided by experience, memory, sensation, and emo-

tion. Einstein once said that had he not been a physicist, he would have been a musician: “my brain seems to think music.” The arts teach us not just how to create pleasing objects; they teach us how to think.

Neuroscience continues to amass compelling evidence that the thinking processes associated with artistic creation and discovery are intricately interconnected with those that we associate with reason and logic. While some may find this surprising or counter-intuitive, it is only because we have built false dichotomies between these two realms of human experience. The creative mind is at work across the broad spectrum of human endeavor, from musical composition and performance to scientific analysis. The walls we have built between these two are products of culture and ideology, stemming in part from the characteristic bent in American culture toward practical ingenuity and a concomitant distrust of things ethereal and unconfirmed. But the mind operates according to a different set of understandings. It prizes novelty. It is innately curious and finds pleasure in assembling disparate knowledge and ideas in new and untried combinations. The driving forces of curiosity and imagination may find expression in matching up bits of genetic material so as to produce more drought-resistant

crops, or in the arranging of words into poetic patterns that reveal to us new ways of visioning the world. Stimulating the brain to engage the world and form new neural pathways is best accomplished by challenging it to process reality in a wide variety of ways, from artistic endeavor to mathematical modeling. As children grow and develop, they will naturally gravitate toward one field of endeavor over another, but their passion for learning will always be fueled by the joys of discovery they experienced when young.

As to the second question: does arts education equip students with marketable job skills? If we think of career preparation as skills training, then probably not. After all, the ability to properly perform a Chopin étude is of limited use when designing a bridge span. Yet if we think of career preparation as teaching young people how to become high-value employees and future leaders, then the answer is an unqualified yes. Recently, Thomas L. Friedman, author of *The World is Flat*, interviewed Laszlo Bock, senior vice president of people operations (Human Resources for those of us still mired in the pre-Twitter world) for Google. Friedman asked him what Google looks for in prospective employees. Laszlo started by saying that the traditional markers of achievement, such as college GPA and



Don't Forget the Arts

Continued...

test scores, are, in his words, “worthless....We found that they don't predict anything.” So what does matter? Laszlo outlined five traits.

The first is what he calls “general cognitive ability,” which he defines as the ability to “process on the fly.” Successful job seekers must be able to demonstrate not only that they know a lot, but that they can seek out information quickly, find meaning in it, and apply it to solve problems. Sounds a lot like what an artist or poet does in trying to convey an emotion, an image, or a set of circumstances.

The second is leadership, which he describes as the ability to step in and lead when appropriate, and to relinquish the leadership role when someone else is better positioned to move forward. This is the same aptitude that an actor must have

when playing a leading role in a play with many other important supporting characters; it is equally true for the concert musician who has one important solo performance in a concert.

What else? Humility and ownership are also on Laszlo's list. Again, we reference the necessity of successful artists to let their own brilliance shine when appropriate, and to subsume that brilliance into a greater creative whole when appropriate. Hamlet may be the leading character, but he makes sense only within the context created by Ophelia, Polonius, Horatio, and all the others.

Finally, and least important, is expertise. Certainly those who have strong technical skills can contribute to an organization's success. But those technical skills are of little use unless they are deployed in sup-

port of larger collaborative effort.

Laszlo does not specifically mention the arts, but clearly the qualities he is seeking in prospective employees are those that are developed in arts education. As a nation, we face tough challenges: we must find ways to regain our competitive edge in the global business environment, and we must continually cultivate the enormous potential to be found in the minds and spirits of our young people. We must give them our very best. Unless we include the arts as part of their educational upbringing, we will have done them – and us – a disservice.



Connections

By: Dr. Nathan R. (Nate) Templeton - **ΚΚΨ** Alumni
Assistant Professor of Educational Leadership at Texas A&M University - Commerce
Gamma Phi '84

Growing up in rural East Texas, the thought of attending college in a “big city” was a daunting task. I fondly remember the night before I was to matriculate to Stephen F. Austin State University. My mom was so excited. She had all of my stuff packed and was already making plans to convert my bedroom into a sewing room. Well, sometime during the night I made the command decision that

I was going to stay home and attend junior college. The next morning, it was as if mom knew my heart. She fondly spoke of her college days, the friendships that had been forged, and the lifelong attachment to a group of ladies in her sorority.

So, off to college I went – crazy green fishing cap and all. Surpris-

ingly, it didn't take long to meet some of the neatest people – all of whom eventually became my brothers in the Gamma Phi Chapter of Kappa Kappa Psi. After graduation, these same crazy guys became my colleagues. Sure, we always tried to get our bands to out perform each other or see who could collect the most solo & ensemble medals, but at the end of the night it was

Connections

Continued...

a heartfelt hug and the meeting of teary eyes; for in the end we were always going to be those crazy kids who did crazy stuff in a great fraternity in the "big city" of Nacogdoches.

As we wondered through life, there was always a magnetic attraction to each of us – no matter what part of the world we called home. A few years ago, my mom died of cancer. It was a tough experience to live through – watching someone you love just waste away. I was absolutely grief stricken. But the first calls and the last visitors to leave were my brothers and sisters. In fact, it was a Beta Zeta alum who arranged for hospice care and walked me through the entire process.

Likewise, the first people to congratulate me on the birth of my two children were these same brothers and sisters. As the great philosopher George Strait one wrote, "life's not the breaths you take – the breathing in and out

that gets your through the day, ain't what it's all about. You just might miss the point – trying to win the race! Life's not the breaths you take, but the moments that take our breath away.

You see, building better bonds isn't about reliving old pledge stories (and there are many); conversely, building a better bond is about the symbiotic connection between brothers and sisters. As Ralph Waldo Emerson wrote, "all life is an experiment. The more experiments you make...the better life you will have." What a profound and impactful statement. Brothers and sisters cherish the moments and savor the days. It's not enough to know all of the ritualistic secrets and symbols of our great organizations; it's about building relationships that tug at your heart and cause that lump to climb in your throat.

I'll never forget the good old days. It's Dr. Templeton now, but deep down, I'm still Nate - the kid

with an uneasy smile...a pledge book...and a green fishing cap. You see, we truly are the sum of our parts. My parts have been through many "life experiments," but in the end, the terms "brother" and "sister" are more than words – they have become a way of life.

My brothers and sisters, I wish you well and pray that your experiences are as uniquely telling as mine. It's been a long journey – but wow what a ride! Spend some time making connections – the kind that will surely take your breath away.



Bonds over Time

By: The Zeta Kappa Chapter Charter Members
Kappa Kappa Psi/ Texas A&M University - Commerce
Compiled by: Brandon Fisher
Zeta Kappa Chapter President



As college students, we are naturally caught up in the "now" of what we are doing, even though we are here to plan and prepare for our futures. Kappa Kappa Psi and Tau Beta Sigma play major roles in our lives, and will likely have a lasting impact on the lives that we lead after college. Please join all eight Charter Members of the Zeta Kappa Chapter of Kappa Kappa Psi as they reflect back on the bonds that they have created

over the years through this fraternity.

"I am reaching that age when friends are starting to depart. There are so many who have touched my life whose impacts I later learned were important to me. I'm glad to hear our efforts survived so many years later. You all are tremendous musicians and your passion really shows. One thing is certain, you all under-

stand what a fraternity really is and that shows as well. You all have made me feel "at home" again in the Brotherhood, a very good feeling indeed!"

- Marty Burnett

"When Steve and Don first approached me about the idea of starting a Chapter of Kappa Kappa Psi and told me what it was about



Bonds Over Time Continued...

I immediately said I'm in. It was an opportunity to start an organization of the band, for the band, and open to all band members regardless of major. I cannot completely speak to the thoughts of the other seven founders, but it was my hope that the Zeta Kappa Chapter would be a true service organization where musicians could give back to the instrumental ensembles of which they were a part. A group that would foster pride of membership both in the band and in the chapter, while placing a higher priority on service projects than social gatherings. I am so impressed with what the Chapter has become. It is my hope that the chapter will continue to grow and prosper."

- Walter Drew

"Just over forty years ago, I joined Steve Sulak, Don Webb, Marty Burnett, Walter Drew, Ron Hoes, Brooks Witten, and Larry Yeager to form the Zeta Kappa Chapter of KKΨ at East Texas State University. Steve Sulak and Don Webb were the leaders in this effort and performed the lion's share of the work to establish the chapter while recruiting the rest of us along the way. Our motives to establish a KKΨ chapter were varied but revolved around the desire to support the ETSU Band under Dr. Neill Humfeld. We managed to recruit our first pledge class and doubled the size of the chapter; but despite this success, we were still concerned whether the chapter would last. I graduated from ETSU shortly thereafter and over time, lost contact with all my Zeta Kappa brothers. At the Founder's Day weekend in 2012, it was very moving to be reunited with my old brothers and an honor to meet all our new brothers of the Zeta Kappa chapter."

- Claude Higginbotham

"As one of the founders of this chapter, Kappa Kappa Psi has al-

ways meant a lot to me. The ideals and goals of this organization brought people together from very diverse backgrounds. Each person I have encountered has indeed come from a different place and was even going down a very different career pathway. This fraternity gave us common purpose and unifying goals. It has given each person a place to serve, a challenge to grow and a support system for our college life.

We, as founders, came together, being different on the exterior but in agreement on several items. Some of those were our character, our heart to serve, our desire to promote music in our band and our respect for one another. We were like an unofficial brotherhood acting independently and then we joined a great fraternity and made it official."

- Ron Hoes

"Was it worth it? Hell, yes. We forged life long friendships. It strengthened our resolve to do something against sometimes-adverse circumstances. We were never sure what would even come of it. You never truly realize that you are making history when you are in the middle of it. I know it was a great decision, because I have met the truly great men and women of Kappa Kappa Psi that I share a bond with because of it."

- Steve Sulak

"There are few, if any, opportunities in a person's life where they get the chance to start something new. And of those opportunities, there are few that last beyond a person's own lifetime and have a positive influence on the lives of so many others. It means a lot to me as a charter member of the Zeta Kappa Chapter to have had such an opportunity. It is truly an honor.

There will always be opportunities where boldness, courage, dedication and persistence are required. May the men and women of Kappa Kappa Psi pursue those qualities in preparation for that once in a lifetime opportunity that may one day come their way."

- Don Web

"I would like to express my deepest gratitude to all. It is seldom that one is allowed opportunities such as you afford us. Actual windows into your lives. However, you also give us the gift of reintroduction into this Chapter. A very special honor indeed."

- Brooks Witten

"I joined Kappa Kappa Psi when it came to East Texas State University (now A&M University - Commerce) because I was in need of a Brotherhood, and I liked what I saw in the men who came to our campus. I liked what they had to say about Kappa Kappa Psi, what they stood for, and how important they considered their role was in serving the band."

- Larry Yeager

**REMEMBER FRIENDS, AS YOU
PASS BY**

**AS YOU ARE NOW, SO ONCE
WAS I**

**AS I AM NOW, SO YOU MUST BE
PREPARE FOR THIS, AND
FOLLOW ME**

- Zeta Kappa Chapter Poem



Relationships and a Helping Hand

By: Jessa Martinez - ΤΒΣ
Texas A&M University - Commerce/ Epsilon Beta Chapter
Chapter President

It's really amazing how much work goes into running an organization, and a lot of people that don't have the opportunity or desire to become a part of one may not understand that. As members of Kappa Kappa Psi and Tau Beta Sigma, we know that our duties go beyond socializing with our Brothers/Sisters, fundraising, and everything else the typical fraternity or sorority do. We serve others around us and do whatever we can to help ensure that our music departments run smoothly. This past year, I had the honorable and stressful task of holding office as President of our Tau Beta Sigma chapter here; there were only 5 of us active at the most. Many of us had to hold multiple offices and committee head positions. Ensuring our chapter survived and grew, this is what needed to happen, and I will admit it was a little scary sometimes. I encourage those that do not have much of a relationship with your Brother/Sister chapter, please establish one. The few ac-

tives of our chapter did all we could ourselves, but sometimes we just needed that extra help due to our low numbers. Many Brothers of our Zeta Kappa chapter of Kappa Kappa Psi provided that when it was necessary. Not only will people be willing to help within the department, think of the alumni that still hold their organization near and dear. There have been many times that alumni have contacted me asking what they can do to help out the chapter, whether financially or at events we hold. As a whole chapter of young officers, there were many times where it was hard to organize our respected offices because of a very sudden transition; many of our oldest members were already gone. It is important to remember that as officers or committee heads, we must be that help for the future of officers and members. Communication is so very beneficial, and often times answers are only a phone call away. Build those bonds with the other music organizations within

the department and keep in contact with alumni. Do not be afraid to ask for help. Sometimes pride may provide a barrier, and the burden may fall harder on your shoulders as a result, but it is okay to let the guard down.



Just Another Brother: Gender Diversity and My Experience as a Member of Kappa Kappa Psi

By: Kristin Koch Goodman - ΚΚΨ Alumni
Zeta Kappa Chapter, Alpha Rho - Spring 1998

Prior to World War II, the National Constitution of Kappa Kappa Psi stated that membership of the fraternity be composed entirely of white males. Thankfully, much has changed since then, and our Brotherhood is now a rich tapestry of different races and ethnicities, as well as both genders. A. Frank Martin, one of the Founding Fathers, also came to believe that everyone should have the opportunity to develop leadership and advance in music through membership in Kappa Kappa Psi.

As the first female initiated into Zeta Kappa, I was fortunate enough to experience first-hand the beginning of gender diversity in our chapter. When gender is disregarded for member-

ship eligibility in both ΚΚΨ and ΤΒΣ, numbers of both organizations increase, as individuals who feel they would not be as good a fit for one group join the other (which was my case back in the fall of 1997).

I would be remiss not to acknowledge the open-minded approach the active members of Zeta Kappa had toward my membership inquiry at that time. Rather than a rejection along the lines of, "Why change how it has always been?" and pointing me in the direction of our university's ΤΒΣ chapter, those members allowed me the opportunity to serve the band where I felt I best belonged, and become part of an incredible Brotherhood that I will always cherish. I must also credit

my positive experience becoming a Brother of Zeta Kappa to the fellow members of my Alpha Rho MC class, who accepted my inclusion with complete kindness and graciousness.

Diversity is vital to the overall mission and vision of Kappa Kappa Psi. Every person has unique qualities and perspectives to offer, and the combination of these differences allows opportunity for growth of our organization, as well as development of each member's potential. The unity of our Brotherhood is unquestionably strengthened by such diversity, both gender and otherwise.



The Beginning

By: Stephen Sulak - $\text{KK}\Psi$
Texas A&M University - Commerce/ Zeta Kappa Chapter
Charter Member/ Alpha Class President

Brothers, It is an honor for to submit an article for the New Alto as the origins of Kappa Kappa Psi at East Texas State University (now A&M University-Commerce) in Commerce, TX. Remember that it has been over 40 years since we did this and memory can be a bit shaky. The premise upon founding this organization is simple. There was a need and we filled it.

When I came to Commerce there was only one music fraternity, Phi Mu Alpha Sinfonia. You had no choice. I, and my Brothers, believed in band. Many of the members of the Phi Mu Alpha Chapter on our campus at the time (although I am told there is a strong and supportive Phi Mu Alpha Chapter on campus now) thought that band was a stepchild in the hierarchy of musical organizations. Even some of those members were in the band and were going to be band directors had this misconception. This was foreign to us. We felt that a service fraternity of band members would fit the bill. Band had given us a lot and we wanted to give something back

It was a difficult task to start something of this magnitude. Remember this was before personal computers, the Internet,

and cell phones. There were many hurdles to be conquered in the music department itself, the university, and nationally. My friend Don Webb and I worked many hours to get this started. We first had to determine if there were others interested. There definitely was interest. Forms, deadlines, and meetings with higher ups all had to be met. Also fund raising was a must - house painting, bingo, tee shirt sales, and many others. This - on top of being a music major - took many hours of work. We had setbacks, but we overcame them.

Was it worth it? Absolutely! We forged life long friendships. For some of us it helped us in our careers. For all of us, it strengthened our resolve to do something against sometimes-adverse circumstances. For this I am proud, and I am proud of my Brothers: Don Webb, Ron Hoes, Brooks Witten, Walter Drew, Martin Burnett, Claude Higginbotham and Larry Yeager.

Remember Brothers, band bonded us together and taught us how to become a part of something that went beyond just ourselves. It was an honor and a privilege to be able to start and continue on this fraternity. I will forever be grateful for what I gave

to it, but more importantly, what it gave to me. We worked hard for something that we believed in greatly and that is why we all carried on. I will leave you with this quote by Art Williams that sums up our journey beautifully and simply,

"I'm not telling you it's going to be easy...I'm telling you it's going to be worth it."



Friends Vs Brothers

By: Brandon Fisher - $\text{KK}\Psi$
Texas A&M University - Commerce/ Zeta Kappa Chapter
Chapter President

If you ask any member of Kappa Kappa Psi why they wanted to join the organization, you will get a vast variety of answers. Why you chose to join the organization, and what you ended up benefiting from it are two questions that will most likely draw differing answers. Not only will these answers differ,

but they are also constantly morphing and adapting depending on the direction that your life is going in at any given moment. The answers could range from service, friends, Brotherhood, music, or any combination of all of these factors, and many more. For many of us, it is usually for friendship and Brother-

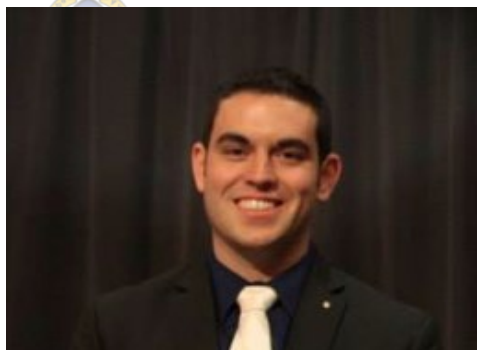
hood, but it is important to realize the difference between friends and Brothers, how to approach them, and the roles that they play in your Chapter.

We often refer to our Chapter as our "family," or our "home away from home." You do not



Friends Vs Brothers

Continued...



choose who your family is because you are born into it. Your family loves you unconditionally simply because you are all connected. The same can be said within your Chapter.

into it. Your family loves you unconditionally simply because you are all connected. The same can be said within your Chapter. You don't always choose who exactly is in your organization, but you love them unconditionally because you have something in common, Kappa Kappa Psi.

My older brother and I constantly fought when we were growing up. Anything from who was able to hold the remote while we watched TV to who was going to have more friends at our birthday party (we were born on the same day, but two years apart - very inconvenient). It didn't matter. We would fight about it. He would constantly pick on me, make fun of me, and go out of his way to be hard on me, BUT if anyone else even dared do the same to me, then they would definitely have it coming. I was HIS brother. WE were family, and you don't mess with that.

These Brothers that you connect with in your Chapter are your family. This does not necessarily mean that they are your friend all of the time though. The definition of "friend" according to Webster's Dictionary is, "someone you like and enjoy being with." I am sure that not every single Brother of Kappa Kappa Psi is your best friend or your cup of tea. This is because through Kappa Kappa Psi, they are your Brother, but

not necessarily your friend.

The definition of Brotherhood according to Webster's Dictionary is, "feelings of friendship, support, and understanding between people." This is where the unconditional love comes into play. Through Brotherhood, we are able to find friendship, but this occurs at different level for each of our members.

During my freshman year, when I first met Dylan Schau, I honestly thought that he was one of the most arrogant, self-serving, hyper analytical jerks that I had ever met. He was fresh out of what seemed like his 17th season of drum corps, according to the stories, and I really didn't like him. In fact, I literally despised him, and spent the entire marching band season resenting having to even be in the same section as him. Most of my first judgments were made before I really took the time to truly get to know Dylan as a person. We both began our membership process for Kappa Kappa Psi as members of the Beta Lambda Class of the Zeta Kappa Chapter. It was around this time that I realized that although I had not liked Dylan up until this point, he was my line Brother. He was a part of me, and I would do anything for him. Throughout the process I began to realize that he actually wasn't so bad after all. In fact, Kappa Kappa Psi helped me realize that he was actually a pretty good guy and was really fun to be around. After taking the time to truly get to know him, I saw Dylan's true character, and was able to find a lifelong friend through Kappa Kappa Psi's Brotherhood. Dylan has been my college roommate now for two years, and he is one of the best friends I have had the privilege of having in college.

Cliques will naturally occur in every Chapter. Seeing as I currently live with two Brothers in my Chapter, it is very easy to call us a clique. I mean, come one, I sleep within a ten feet radius of them, and spend a great amount of meals and weekends with them by my side. We are natu-

rally together more than we are with many of our other Brothers. The key to cliques is how to approach them. It is not necessary to spend hours upon hours in Chapter meetings discussing how to eliminate cliques. This puts individuals on blast, and only forces those groups of individuals to be drawn closer together in retaliation. Instead, naturally separate the cliques. My roommates and I never sit together at Chapter meetings, and are rarely seen together at Chapter events because we know that we will see each other at home, and want to take advantage of the time to see other Brothers. Always try and sit by someone new at Chapter. Go out to eat with Brothers that you do not normally see or spend time with.

We don't have to be best friends with everyone in our Chapter in order to have a good Brotherhood. Having a good Brotherhood means that we search for friendship within our Brotherhood, instead of Brotherhood amongst friends. I am personally not best friends with every member of my Chapter, but I love them all unconditionally, and more than they will ever truly know. They give me meaning day to day. Everything I do, I do for them. The relationships I have made through this organization have directly influenced the choices I have made in college, and the direction that my life is heading in. I want all future generations to be able to experience this as well, and I have always used that as my motivation. The bond that we share with each other is rich. It's deep. It's larger than life. It's bigger than just you or me. It's bound by music, the greatest of the arts. It's one of the best decisions we have ever made. It's a once in a lifetime opportunity. It IS striving for the highest. It's what Boh wanted. It's Kappa Kappa Psi.

AEA



Get Ready for District Convention

By: Sara Bitting - TBΣ
Baylor University/ Iota Chapter
Co-Convention Chair

Hi Brothers and Sisters!

Beta Alpha and Iota here at Baylor are getting very excited for convention this year! We have a lot of fun things planned this year. For starters, we will be having the Talent Show on Friday night outside (that is if weather is good!)! It'll be concert style so bring blankets to sit and enjoy the acts and beautiful outdoors.

Our banquet will be in our newly remodeled Waco Convention Center! There will be a super delicious sit down meal with your choice of filet mignon or Italian herb chicken – so make sure you register and choose your meal! There will also be grilled portabella for the vegetarian and other dietary needs option.

Now here are some important details:

To register, visit swd2014.weebly.com and there are tabs to register online or a document you can download and mail in your registration. Registration is \$43 with a \$1 convenience fee if registering online. This year,

the glassware is not included in registration, but can be ordered separately!

The last day to register without an additional fee is April 4. There will be an additional \$5 charge if registering late and you are less likely to get the food choice you desire and correct T-shirt size. Late registration closes on April 11. We can accept people after this date, but you will not be guaranteed a meal at banquet or a T-shirt so make sure you register.

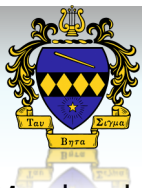
We are all so pumped to be having you guys come to Baylor this year!! We hope to make this a phenomenal experience!

Date: April 25-27th, 2014



P.S.

This semester, I helped my chapter with our genealogy. We traced people's line through the big sister to see how we were all connected together. I of course Facebook stalked some of these names and actually discovered many connections between sisters and other people at Baylor with me! It was crazy!



Bridging the Gap Between Alumni and Membership Candidates

By: Emily Murphree - TBΣ
Howard Payne University/ Delta Upsilon Chapter
Southwest District Secretary/Treasurer

Membership candidates of both Tau Beta Sigma and Kappa Kappa Psi are the epitome of fired up service volunteers. Coming into the organizations, they see older men and women working together to perform service tasks for the band and others while having fun. What a sight! We were all once membership candidates, bursting with excitement and wonder of the mysterious secrets held within the organizations, while secretly hoping that we would each make it

through the entire membership education process.

Several membership education processes require candidates to interview actives, some honorary members, and give the option of interviewing some alumni. During these interviews and other chats, alumni and candidates can form a relationship to build upon as the candidate grows in the process and is molded into an ac-



Bridging the Gap Between Alumni and Membership Candidates

Continued...

tive member. Candidates can into an active member. Candidates can then feel comfortable asking the alumni members questions pertaining to how situations were handled when the older, more experienced alumni was active in the chapter.

Homecoming – the time during football season when most all of the alumni come back to their alma mater to hang out with their old college friends. This time is also a perfect time for chapters to host an alumni ban-

quet of some sort in order to draw more alumni home and



allow the newest members to meet and greet. During this time, new members generally get an earful of history of their chapter and/or joint chapters while enjoying the atmosphere of other brothers and sisters. How awesome it is to be a part of an organization with such rich history! History that you too, in the next few years or sooner, will become a part of.



Community Service Projects

By: Leah Haskett - KΚΨ
Oklahoma State University/Alpha Chapter

This year in our chapter, our Vice President Laura Wirth wanted to try to expand our service projects beyond Oklahoma State University. Last semester during the football season, groups of students from the Cowboy Marching Band, mainly consisting of Kappa Kappa Psi and Tau Beta Sigma members, journeyed to different high schools around the Stillwater area on Fridays to play with their bands during games.

This was a great way to interact with and get to know high school band students and potential future CMB members. We would play some of their stands tunes with them and also some of our own fight songs, which the crowds really enjoyed. The high school students seemed to have a good time meeting and playing with us, and we were able to tell them

about what college band is like and encourage them to join.

We hope to continue with what we called "Spirit Tours" next year.

Spirit Tours

One project we are currently working on is going out to the elementary schools in Stillwater and having an instrument "Show and Tell" to try to get younger students excited about music and interested in potentially joining band when they get older. We have a decent array of instrumentation in our chapter, so students would be able to see and try out a lot of different options.

We are excited for this chance to get to share our love of music with the younger citizens of our community and hope that it will

be a very positive experience for everyone involved.





How to get your chapter to #NatCon2015

By: Heather McGowan - TBΣ
Baylor University/ Iota Chapter
Southwest District President 2013-2014



National Convention is such an exhilarating time to meet sisters and brothers of all ages and from all different walks of life. It is a time to get involved with the future of our organizations and make vital decisions that will affect our organizations for that biennium and beyond.

We have a unique opportunity while being active members of Kappa Kappa Psi and Tau Beta Sigma in that we are student-run organizations. We do have a handful of adults who help guide us in all the logistics of the organizations, and they bring ideas to the table, but we get to implement the ideas. That is what National Convention is all about... moving forward and working towards creating "perfect" chapters and "perfect" organizations.

Missing a National Convention is the equivalent to missing 4 years of change within either association... That is basically your entire collegiate career! While the last National Convention was only 9 months ago, and the next National Convention is 15

months away, you can never start planning and saving too soon!

The 2015 National Convention is in Lexington, KY at the end of July. For the members in the Southwest, it is much more do-able than Springfield,

MA. Springfield was awesome, but flying was a better option than driving. However, with National Convention in Lexington, it is more feasible to drive, which could ultimately save money.

Cost of National Convention

This past National Convention was a little like this:

- Registration: \$125
- Hotel for 5-6 nights: about \$110 a night
- Flight Travel: \$200-400 per ticket... round trip \$400-800
- Driving: depending on vehicle \$600 in gas

*these costs are why it is so important to start saving now!

Fundraisers

With every fundraiser your chapter does, you could take 20-30% of that fundraiser and put it into a National Convention account. If you utilize a bank that is not affiliated with your school, you can open an auxiliary account and start saving money there. It does require some paperwork, but

the time spent setting it up will be well worth it. However, if you utilize your school's bank, you will need to talk to them about how you are trying to get your chapter to National Convention!

If you save 20-30% of each fundraiser, you could end up with \$300-500 to go towards National Convention which would account for most of the hotel and registration!

At least once a semester, you should designate a fundraiser that will solely go to your National Convention fund!!

Membership Education Program

You're probably thinking... why is it important to have this topic in this article about National Convention? If you include in your MEP how important it is to attend National Convention and even discuss changes made to the Fraternity and Sorority during past National Conventions, your Membership Candidates will have a better understanding of the importance of attending this awesome event.

Think about it like this...

Your Membership Education Process today will affect your chapter in the future because you are training future members of the organization.



How to get your chapter to #NatCon2015

Continued...

Communication

Communication is key!

Ask questions! Ask for suggestions!

Who do you ask??

Your District Officers!

Your National Officers!

Your alumni who have at-

tended a National Convention!

There are so many great resources out there and through a click of a mouse, you can contact all of those resources!

The Southwest did have a fantastic turnout in Springfield, so naturally we should have even more

Southwest Brothers and Sisters attend National Convention in Lexington since it is closer to home.

On your mark, get set, and plan for #NatCon2015



How to get your Chapter to National Convention

By: Eric Barnett - ΚΚΨ

University of Arkansas/ Lambda Chapter

Chapter Corresponding Secretary



I believe doubt is the hardest obstacle to overcome when trying to convince your chapter to travel. As corresponding secretary this the most difficult task presented to me. However, I firmly believe there are many solutions to overcoming this issue.

Each year we welcome a new

class into our chapters. Although welcoming new brothers is an unparalleled joy, persuading them to venture from their "bubble" can be difficult. Thus the reason you should discuss traveling before they begin their process. Certainly don't harass them, but share a story or two. Experiences through stories will exceed the bounds of fear in almost every instance.

Step Two: Do NOT harass your brothers! How many times do you sit through a chapter meeting and predict exactly what will come out of the next person's mouth? It probably happens more often than not. If you want your chapter to travel you can't bore them with the same phrase, the same information, and you must not turn your words into a boring novel! Try to be short and sweet to the point, but also tactful with the words that

you use. Instead of five hundred words try fifty and put the remaining information on the chalkboard, white board, or some display instead of reading it to your chapter like they are incompetent. I found that giving my chapter a few short sweet reminders was more effective than one long reminder.

Lastly, be compassionate and understanding. Everyone in your chapter will not be able to travel because as college students we have an extensive "To Do" list. Getting even one new person to travel is a feat; you can congratulate yourself for that. Strive for the Highest and know that your best may not receive a one hundred percent return from your brothers, but likewise realize that your brothers appreciate the hard work you invest insuring your chapter excels.



Building More than Just Bonds: An MC's Perspective

By: Spencer L. Hill - ΚΚΨ Membership Candidate

University of Oklahoma/Delta Chapter

Coming into a large university can be overwhelming for many people. There are many different clubs, organizations, and events that a person can become a part of. With all of these numerous opportunities open to anyone, it can be difficult finding your place. For me, I truly feel that my membership candidate experiences with Kappa Kappa Psi have shown me

that I will soon fall into the right place. The membership candidate process has been a major part of my spring semester and has benefited me in several ways. Our chapter, the Delta chapter, has a fairly large amount of members in it. Because of this, I have been able to branch out and meet many different types of people, allowing me to create many friendships and

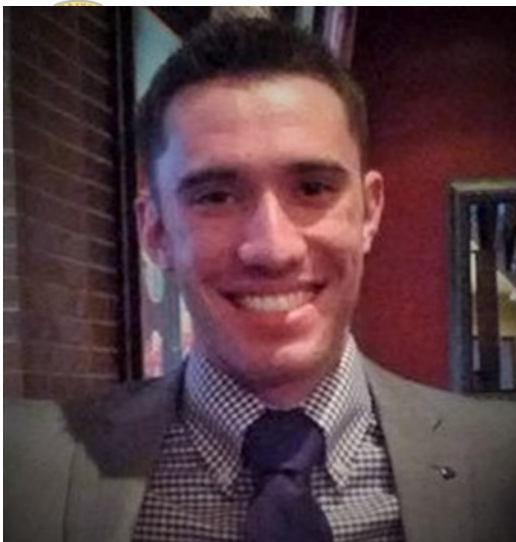
meet people who have similar interests as I. Taking the time to get to know the members of my chapter has permitted me to learn more about each person individually which has caused me to feel a stronger connection with my soon to be brothers. Moreover, the process of going through degrees has shown me that I

(Continued on page 16)



Building More than Just Bonds: An MC's Perspective

Continued...



am about to become part of something much bigger than I originally

thought. Each degree has given me a taste of what our fraternity is like. much bigger than I originally thought. Each degree has given me a taste of what our fraternity is like. It has shown me the aspects of brotherhood, what our fraternity strives for, and how we are all united with our love for music and service. The overall effort that I have put in throughout this membership candidate process makes becoming a member of Kappa Kappa Psi very rewarding. Because of my Kappa Kappa Psi membership candidate experience, I feel like I have grown and will continue to grow as a person and I have obtained valuable attributes, such as motivation, dedica-

tion, and perseverance. I have created numerous relationships and connections, have been taught valuable skills that I can apply to my everyday life, and most importantly, I am about to become a part of an organization full of people who will push me and motivate me to strive for the best. With such a great membership candidate process, I can only imagine how great my experiences will be as an official member of Kappa Kappa Psi.



History: A GPS For Your Chapter

By: Makaya Buckner - TΒΣ

University of Arkansas/ Psi Chapter

History is something that affects each one of us, and something that we all take part in creating. Each day we make history. Something important we can do in our organizations is to look back and remember the history from the days and years that came before us. There is such a forward movement in today's society, but it is healthy to just remember sometimes. I like to think of it like a GPS; you have to know where you are coming from in order to figure out how to get where you want to be.

I am a sister of the Psi chapter of Tau Beta Sigma at the University of Arkansas, and each week, we incorporate a little bit of history into our chapter meeting. This semester, our historian has started a new tradition in which she tells a small part of our organization's national history. She started the first week with the story of the first woman in the Texas Tech Band, Emily SoRelle, and another very important woman by the name of Wava Banes. Each week she adds on to the story, and at the end of the semester, she will have told the whole story of how Tau Beta Sigma came to

be.

This past fall, I had a wonderful opportunity to interact with some of our own chapter history. At a football game, it was brought to my attention that our founding president, Francis Barton Nutt, was at the game and wanted to go see our band. A group of sisters walked over to meet and escort her back to our band stands. I got to talk with her a little bit about her time here and founding the chapter. I remember that she was so impressed with the way that we treated her that at one point she told us she felt like she was royalty. In our eyes, she really was.

It is our job to honor our sisters and the past. As Liam Callanan once wrote, "we all carry, inside of us, people who came before us." We all carry the spirit of Wava, our own chapter founders, and countless other sisters who came before us. At the Arkansas Area Workshop this spring, a former sister told us something that really hit the nail on the head. She told us to honor the past by supporting the future. We must honor the sisters who worked so hard to create

such an excellent organization for us by maintaining it for ourselves and future generations. It is of utmost importance to know where we came from, but it is also important that use our history as a tool as we begin on the journey to where we want to go.





How to be more involved on the District and National Level

By: Helen Moore - ΚΚΨ
Southern Oklahoma State University/ Eta Nu chapter
SWD President

Hello Southwest! It brings me great pleasure to write on a very exciting topic for this NEW ALTO! To be honest, when I was a Membership Candidate, it never came to mind that there were so many ways that I could personally be involved at the District and National level. I mean, you learn about the different events and awards but it didn't sink in for me until I attended my first District Convention "Vintage Vinyl" in the Spring of 2011.

I believe the easiest and one of the most productive ways to be involved is to attend conventions and participate as the chapter delegate. When you're the chapter delegate, you vote on behalf of your chapter, attend committee meetings and help shape the future of the Fraternity! I know it sounds daunting but I have found it to be very enjoyable and worthwhile. Another option is to attend your Area Workshops in the Spring season. The District Presidents and the Area hosts work very hard to provide a great experience that entices you to bring new ideas to your chapter and hopefully more attendees to the next workshop. Every day event hosted by the district, including District Day, Chapter Leadership Conference, Area Workshops and Convention, are designed to develop service, leadership and musicianship to foster a better brotherhood. Take these opportunities to become more involved while you are active

and can make a difference.

Another way to become more involved at the District and National level is by running for office!! All of the positions available are open to any active member and you don't have to have chapter leadership experience. By being involved with the District and National Fraternity by ATTENDING events is a great way to show your abilities and there's other ways to show leadership ability than by being a part of the executive council of your chapter. If this is something you would like to do, take a chance and see what happens. If you don't win, run for candidacy the following year. Your defeat does not measure your success, but not trying does.

One of the last ways to be more involved is by applying for Fraternity awards, including scholarships and chapter awards at District Convention, and writing articles for your district and national publication! There are many scholarships available to active members just like you and are never applied for because no one deems themselves worthy. As said before, try and you might succeed! I know that when I read the Piu Mosso, the NEW ALTO and The Podium, I love reading articles from active members because they are the closest source to the chapter. I personally enjoy hearing about the triumphs of the chapters in this district and I believe that

other actives do as well.

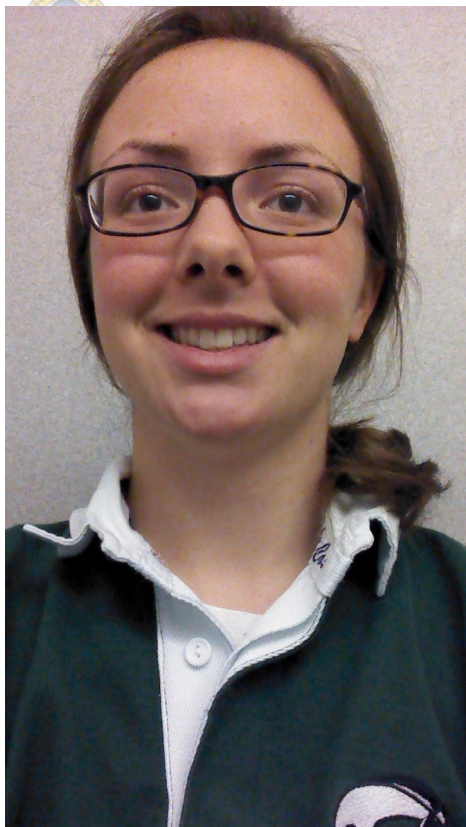
In conclusion, there are so many opportunities for you to be involved in any fraternity level, even ones I didn't mention, but we want members to be involved. When there are people attending the events we plan, it makes the council and the parties involved feel good because we see actives enjoying the event that we worked so hard to plan and seeing a chapter in my district win the coveted Chapter Leadership Award at National Convention makes me so proud to see that chapters really do care and are so involved. The next time something comes along, like an opportunity to write for a publication or to attend District Day, do it! I am certain that you will regret it if you never do!





“How I Met Your Brother”

By: Elizabeth King - KKVΨ
Tulane University/ Rho Chapter
Vice President of Membership Education



Since 2005, the Rho Chapter has been growing from a distant past. The chapter was originally chartered October 18th, 1926 and went inactive in the forties as a result of World War II. Knowledge of Tulane’s chapter and the Tulane University Marching Band decreased significantly after the marching band dissolved in the 1970’s. But with the return of the TUMB in 2005 and discovery of a past chapter at Tulane, the fraternity was revived as a colony in 2009 and as a chapter on February

20th, 2010. Five years later, the fraternity is still creating a face on campus and setting traditions.

This year, the fraternity was actively involved in creating Rho’s first film! Titled as, “How I Met Your Brother”, the video opens with a scene in the Mercedes-Benz Superdome where Tulane hosted all of its home games. The narrator tells a story about “How I Met Your Brother” from behind the camera to two brothers sitting in the stands listening with their instruments in hand. As the plot develops, the viewer is taken on a journey with the unknown narrator. The speaker introduces Scroggs, Boh, Dr. Hilton, the remaining founding fathers, and a few prominent and honorary members of Kappa



“The Stone”, a part arranged by our sponsor, Mark Lighthiser, for a past Earth, Wind, and Fire half time show. Our dance skills were tested too! In celebration of Neil Armstrong’s landing, a few brothers took the Trumpet’s first place dance, double dream hands, from the TUMB’s summer band camp talent show hosted by Kappa Kappa Psi. Many other entertaining scenes exist to add our current chapter’s personality and creativity!



Behind the scenes, this episode is aimed at sealing current brother bonds, refresh-



ing the foundation of the national organization to members both current and new, displaying the creativity of our chapter on campus, and teaching Membership Candidates important information in an entertaining manner. Like many TV shows, more episodes will hopefully come in the future creating a filming tradition. Not only will these fraternity videos create a face for, connect, and educate active brothers, the many scenes we will document add to the history of our current organization and band program.

sicianship by incorporating “In



"How I Met Your Brother" Continued...



This is a good step for the University and the Rho Chapter considering few

records remain of the TUMB and Rho Chapter from the early 1900's. Scenes are scattered from the superdome where football games are held to the baseball field where all teams and clubs shared 80 painted yards in the outfield due to construction of our new home stadium!

There are many bright years to come for the Rho Chapter at Tulane University! With Yulman Stadi-

um on campus this coming season, the marching band is here to stay once again! Although the new football field does not yet have the powerful memories of the Green Wave's Sugar Bowl stadium, our spirit in the band and the chapter are strong, as if the program had never been dissolved. May the current traditions continue and new traditions be born for the better of Kappa Kappa Psi!



Empowerment Through Music

By: Sara Remoy - TBΣ
University of Arkansas/ Psi Chapter

"We provide exceptional service to collegiate bands and promote equality and diversity, including empowering women in the band profession. We cultivate leadership, educational achievement, music appreciation and community development."

As a young woman, a bandman, and a music education major, the Tau Beta Sigma mission statement has always held several meanings. One thing that intrigued me after starting my membership candidate process for Tau Beta Sigma was the line in our mission statement, "empowering women in the band profession." On one level, it is great to know that I am a member of an organization that supports the career that I hope to have one day. On a deeper level, this line is a subtle reminder of what Tau Beta Sigma stands for, and our origins. The girls of Tech Band Sorority back in the late 1930s and early 1940s banded together for a common cause; through their love for band, and to provide a way for young woman who were passionate for service to have a place where they could make their band program better. At that time in history, it was quite uncommon for women to be in marching band. It is from this time in history that Tau Beta Sigma was formed, and how we became who we are today.

Growing up, I have always been inspired by strong female role models. From Hillary Clinton, to Amy Poehler, and to Hermione Granger, I loved reading about women whose passion and nerve helped them accomplish their dreams. When I started college, I learned of a new woman. A woman whose love for music and band lead her to start her own organization which has inspired generations of women and men to follow in her footsteps. This woman was Wava Baner Henry. If it was not for Wava, I wouldn't be the person who I am today. Being a sister of Tau Beta Sigma has blessed me with opportunities to serve the Razorback Marching Band, to serve my community, and the opportunities to build lifelong friendships. Sadly, Wava passed away last fall while I was a membership candidate. As a membership candidate, it was so inspiring to see how moved the members were by Wava's passing, not only in Tau Beta Sigma, but in Kappa Kappa Psi as well. I began to learn more about Wava, and the legacy she left behind for all of us. Learning about Wava and her life inspired me to do my best and to achieve the impossible.

Through my time in Tau Beta Sigma, I know that I will learn many things that will help me later in life. I've become more comfortable with talking to new people. I have learned how organized meeting are supposed to function. I have also learned what

goes into planning events. All these things I know will come in handy when I become a music educator. However, I have learned much more than that. I have learned to value myself, something that hasn't come easy to me in my life. Being a sister in this organization has truly impacted my life for the better. I have found that with so many other things, the more I give to this organization, the more I am blessed by it. I hope that everyone will follow in our founders' footsteps and blaze their own trails, and to "see and ideal and seize upon it, and follow it wherever it may lead you in Tau Beta Sigma."





Defy Time and Space

By: Stephanie McCullough - ΚΚΨ
University of Arkansas/ Lambda Chapter
SWD Secretary/Treasurer

In my interview trips with both Membership Candidates of Tau Beta Sigma and the Prospective Members of Kappa Kappa Psi, I always make a point to explain a few facets of our great organizations that need appreciation. Then, I generally pause for a moment, hand outstretched in a kamehameha fashion, and beg a brief period of insta-appreciation. One consistently noted point of appreciation is the fact that these organizations are so much larger than just our chapters at Arkansas. I tell MCs and PMs about the wonderful benefits of being a part of a district, especially the biggest and best. I rave on about my national experiences. Those times are some of my fondest memories both for the fraternity and in college in general.

My travels have proven more valuable and more precious for reasons other than the beautiful destinations, useful knowledge, and lines on a résumé. The bonds that form on even the shortest of fraternal excursions have been some of the richest and coolest friendships I've made in the past five years. My first notable experience was back in summer 2010. I had just finished my freshman year, and I was so excited to be a new Brother. That was the last year of Kappa Kappa Psi Leadership Symposium, and it was in Lexington, Kentucky. Kaylee Christie and I roomed with two random lady Bros from Michigan, and they were awesome. After the Saturday workshop, we decided to get dinner and walk around with our roommates as well as Brothers from Ohio. The group hit it off quickly. After exploring Lexington by foot, we returned to the hotel and commenced an intense hang out session that lasted until the wee hours of the morning. At some point in the middle of the night, we were looking up each of our bands'

tunes online and showing the others what different sections did at football games. There was Mafia for three solid hours. After 12 hours of hanging out post-workshop, we retreated to our individual rooms and got some rest before check-out time. That summer I spent about 10 weeks working at Camp War Eagle with no internet or phone, and some of the Brothers we met in Lexington sent me snail mail at camp. It truly touched me that people with whom I interacted less than 36 hours total would take the time to do that.



In summer 2011, I was blessed with the opportunity to attend National Convention in Colorado Springs, Colorado and perform in National Intercollegiate Band. I loved every minute of the experience. It was there I was not only able to catch up with my Ohio Bros, but I formed new bonds, especially with some NIB members. I spent all NIB break time with a couple of low brass Brothers from Tennessee and hung out with them for some of convention; those guys were awesome. My NIB roommate has been an awesome acquaintance for years, and I love keeping up with her on Facebook. Seeing each other at District Day last summer was an excellent, joyful reunion. A few Bros from Illinois with whom I hang at convention unoffi-



cially adopted me into their chapter after I tagged along for a Panera run.

A sizeable group of Lambda Brothers and one Psi Sister ventured to Rolla, Missouri to attend Midwest District Convention in spring 2012. It was extremely different from Southwest, but the weekend was an absolute blast. The ladies of Lambda bonded particularly well with some Brothers from Boulder, Colorado from the Friday firework show through the wicked dance after banquet. We still rant on social media about our love for each other.

Last year, something magical occurred between two chapters in the Southwest District. Lambda from University of Arkansas and Delta from OU realized we are basically twin chapters. After hitting it off at area workshops, we found out strange parallels not only in our chapters' histories, but between individuals at our schools. It was weird and wonderful. A few of us attended Delta's third degree in spring 2013 and had an amazing night chilling with Brothers and Sisters. One member from each Delta





Defy Time and Space

Continued...

travelled to Fayetteville in May to attend Lambda and Psi's formal banquet. This year we've had the opportunity to strengthen the bonds between our chapters. We even took a (completely precious) joint Arkansas-Oklahoma picture at Arkansas Area Workshop.



I feel extremely blessed to have not only sororal and fraternal acquaintances, but true friends on whom I can constantly depend. My travels have taught me so much about serving, leading, and best of all, loving. I love my friends across the district and nation. The relationships you can form through Kappa Kappa Psi and Tau Beta Sigma will be the longest lasting, most impacting benefits of membership. All Brothers and Sisters should take the time to build those far-reaching bonds because our wonderful organizations provide incredible opportunity to do so.

One of my final notes to MCs and PMs transmits my firm belief that relationships are not strictly spatial/temporal. Distance

and time should not define friendships or closeness to Brothers and Sisters. Living by this philosophy can cultivate enhanced experiences, both in and out of our fine organizations, by a more incredible range of bonds.



New Members: A Foundation for the Future

By: Samantha Brandeberry - TBΣ Membership Candidate
University of Arkansas/ Psi Chapter



The foundation of every organization starts with its new members. You can't build a house on unstable ground. New members are the life blood of your chapter. They are the fresh eyes of innovation and will be there to lead your chapter after you graduate. Creating strong members from the beginning will insure that there will be someone to contin-

ue to carry the legacy you will leave behind.

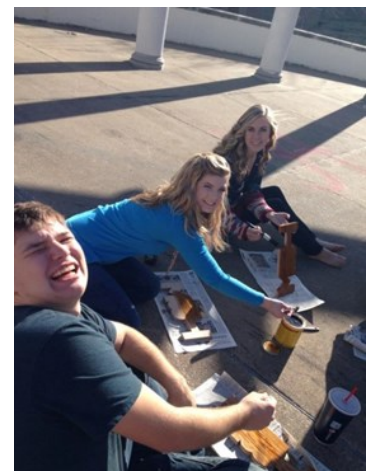
The membership candidate process should push everyone involved to become a better member for the future. Whether you're a Membership Candidate learning everything there is to know about your organization and the members or you're an active member learning how to communicate the importance of service and sisterhood to a younger generation.

From the perspective of a membership candidate, I can tell you that having others invest in my process makes me want to strive to be an effective active member and sister for my chapter when I cross over.

I am blessed to come from the University of Arkansas, where my Lambda brothers and Psi sisters go out of their way to make me feel welcome. As Membership Candidates, one of our large end goals is to fill all the spaces on our paddle, a tradition that has been carried out by the Psi Chapter as anyone can remember. We are required to go on a "trip" with every current member of the Psi Chapter and the Lambda Chapter of

KKY to acquire their signature. Trips consist of a meeting with the Membership Candidate and the member where they spend a period of time getting to know each other and the member gets a chance to explain what being a part of Kappa Kappa Psi or Tau Beta Sigma means to them.

Paddles encourage a development of discipline, time management and pride. Paddles are uniquely theirs from the moment when they begin to sand it, to staining it, to drawing lines and sections on it, to the moment when they fill the last space.





New Members: A Foundation for the Future

Continued...

When on trips with current members, several have told me of years past where the paddles were optional. There were two perspectives: those who were glad that they had participated and those who regret the decision to not do their paddle. Personally, I'm glad that my chapter has deemed them mandatory for me and my sisters. The paddles provide a platform for communication between Membership Candidates and members. Without that platform, I don't know that I would have been able to form some of the bonds that I have with my brothers and sisters.

Everything a membership candidate is required to do should have a purpose. Process is a stressful time, but it's also a learning experience. It can also shape their view of your organization for the rest of their academic career. Many membership candidates are freshman, pliable and moldable, but easily tainted. To convey the appropriate ideas, members should be mindful of their words and actions in front of

and towards Membership Candidates.

One thing that has been important to me as a membership candidate is the idea of joint relations. This year, our chapter decided to do spring rush, while our Lambda brothers kept their fall rush. Consequently, the corresponding Kappa Kappa Psi class to my Tau Beta Sigma class became members of their chapter before I ever started rushing. Despite the detour from what has been done in past years, the relationship between my class, the Gamma Upsilon membership class and the Kappa Kappa Psi class, my Delta Phi brothers, has been exceedingly strong from the beginning. The cultivation of support between membership classes has served as a model for joint relations between our organizations in general. The

establishment of positive joint relations in this manner sets the stage for new members to continue to foster healthy joint relations.



(Pictured Above: The Membership Candidates were invited to support their Delta Phi Brothers as they participated in the Annual Lambda Bowl)



Building Bonds Across Borders

By: Sami Belford - TBΣ
University of Arkansas/Psi Chapter



In July of 2013, I attended National Convention in Massachusetts. I was the only sister from my chapter, and one of four from my school. It was both a terrifying and exhilarating experience. Trav-

eling across the country, by myself, to stay in a hotel for a week with a few people I barely knew, and yet, I built relationships that week that I will carry with me for a lifetime.

Bonds with members from other chapters are some of my favorite that can be developed.

You only get to see them on special occasions, sometimes months apart. But it takes hard work. Maintaining long distance friendships really does take a lot of effort. Facebook posts, text messages, snap chats are a good

way to start. It also helps to travel to as many district events as you can; seeing each other in person builds the connection a bit stronger each time.

The last day of National Convention, I said good-bye to a great friend. We had met once before when I visited Stillwater at the beginning of the summer, and then we hung out all week in Springfield, even traveling to Boston and having crazy adventures. When we said our good-byes at the base of the stairs in the lobby of the hotel, we both hugged each other with tears in our eyes, knowing it'd be over half a year



Building Bonds Across Borders

Continued...

before we would have a chance to see each other again.

I watched her walk away and get into a cab, knowing I had made a lifelong friend. Knowing that our relationship had just barely started. Throughout the year, we talked through Facebook, planned a visit with text messaging, and kept each

other entertained through SnapChats of all sorts of silly things, but usually cats.

I hope everyone has a chance to make friends like this, people who you can hold friendships with across state lines, across time, despite schools and rivalries. Our purposes even encourage close relationships

between collegiate bands, and that starts with members. I urge everyone to attend a workshop, attend District Day, and attend District Convention. Meet someone outside your chapter and start a relationship that could last a lifetime.



To the Future and Beyond

By: Scott Sergeant - TBΣ

Tarleton State University/ Eta Nu Chapter
SWD Vice-President of Membership



what the future holds for me." We tell ourselves this every time we meet. We are all individuals within a greater body; like individual parts of an amazing machine. These bonds are important and every single one serves a purpose.

Bonds can be built a number of ways; anything from hanging out with each other, to offering help. If you want to build a better bond with your brothers or sister, then cook them something or surprise them somehow. If you are trying to build a relationship with a high school director, ask him or her what you can do to help them. See if they need anything done, or see if they could use an assistant. Every little thing will build upon the bonds. It is the things that you do not do that weakens them.

Finally, these bonds that we build, especially with our brothers and sisters, are designed to last a lifetime. I know that people within both of these great organizations have impacted my life and my decisions. I will never forget the people that I have met and have helped shape me into the person I am today, and I am forever grateful.

Remember, build the foundation, and keep it strong. The thing that "binds us side by side" will guide us.

A lot of the time, life in Kappa Kappa Psi and Tau Beta Sigma ends upon college graduation; sometimes sooner. Sometimes though, everything that this amazing organization instills in us is something that will be carried on. Carried on to careers, communities or even families. Our organizations were not just built upon music, but they were also built on making each and every one of us a better person as a whole.

The bonds that we build with each other cannot be broken. "Music, our common tie, which binds us side by side." "I do not know, how long 'twill be, or

Just like the complexity of any machine, big or small, every thing has to work together with the other parts around it. Think of this like us within our own chapters. When we have cohesion within our chapters, then we can work better with the chapters around us, or the brothers and sisters near us. When we work together with the chapters around us, then we can better work with the organizations and people that are not a part of us. Just like a house, if you have a poor foundation (i.e. your chapter) then how do you or others expect to build anything on it?



Occupying Your Chapter

By: Sara Bogue - TBΣ
University of Arkansas/ Psi Chapter



In the Psi chapter of TBS at the University of Arkansas, we have an interesting problem year after year. We have a defined purpose and duties during marching practice, football game days, and on concert days, but the rest of the year doesn't have defined expectations. To a certain extent, we are free to do what we choose. We current-

ly have about 20 actives and a strong MC class of 20 so occupying this many people with service activities is a challenge.

What We Do:

Nearly every year we have a canned food drive or a necessities drive for local organizations such as Northwest Arkansas Hunger Relief (which is already involved with Razorback Marching Band), and 3 Bags in 2 Days. We use connections through members who are Fayetteville natives and make new connections through emails and researching local organizations. Our corresponding secretary has an Alumni Facebook page through which we received an opportunity to volunteer at a fundraiser for the symphony of NWA. Sometimes we assist the band staff with scholarship audition days too. One of our main connections to area high school band programs is an Adopt-a-band activity we do yearly. We attend a high school basketball or football game and perform in the stands with an area band. Through this opportunity we increase interest in our band

program and in college band in general!

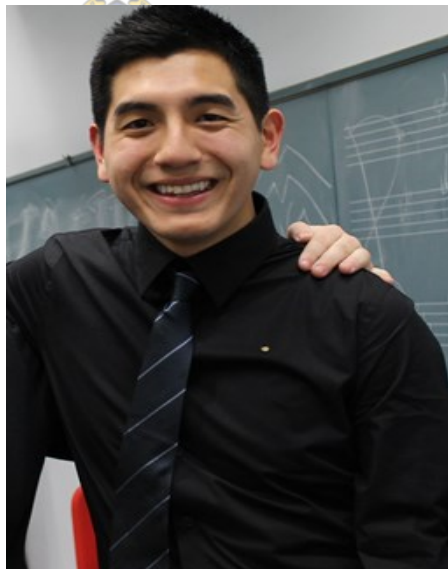
What We Plan To Do:

Since these sporadic events do not consume enough of our time during the year, our chapter will be expanding our role in the band program. We want to be more involved in encouraging high school band students around Fayetteville to continue school and band. This is a vague statement so I'll explain. We want to send a few of our members to area high schools to speak about band and to invite students to visit us. We can also send our members home with business cards and brochures to their home town bands to build our band and to encourage students to participate in collegiate bands. In future years, I would personally like to host juniors and seniors on a Saturday at University of Arkansas to tour the university, band hall, and engage, with our directors and staff. This could be a great help to our program and students in general.



Adventures Beyond the Music Building

By: Aaron Sanchez - ΚΚΨ
University of Texas at San Antonio/ Mu Tau Chapter



As a relatively new chapter chartered in 2010, we have the privilege of establishing our traditions with each passing year. A tradition that has continued on is the "brother paddle", given to a deserving brother each and every week. This brother has exemplified our fraternal values throughout their daily routines and we recognize them for that.

This past year, I decided on trying something new. Instead of solely operating within the Music Department, I wanted to venture out to other parts of the university and connect with the surrounding community. Though the demands of being a music major while serving our university bands is already plenty to handle,

there was a craving for something more. Our art form is a gift and should be shared with everyone.

Being in the nation's seventh-largest city, San Antonio has a huge variety of music students. There are plenty of school band programs that are in need of extra help. So I figured, why not try and connect with them?

A middle school was presented in the Downtown area. This band program has been rebuilding and the director was glad to hear that we could offer his students more individual attention. It turns out that this was exactly what the students needed to push forward; one-on-one time to hone their musical abilities. With four brothers present at the rehearsal, we



Adventures Beyond the Music Building Continued...

were able to take sections out and rehearse with them. The real performance issues are more apparent, and we helped by isolating it and fixing it. After spending one afternoon with the top ensemble, the feedback we received was overwhelming. Not only did the directors appreciate us for spending our time with the students, but the students themselves were very grateful. This was my first experience teaching younger students and I learned how crucial music education is for our community. These students may not have the best instruments or equipment to work with, but they still

have an opportunity to create something that is greater than themselves.

A few weeks later, we returned to the campus and listened to their performance. Their ensemble sounded more mature and confident and more importantly, the students seemed to be enjoying themselves. This is one step in direction we want to head as a chapter. We will continue to serve our university and bands, but moving to positively impact our local music community.

(Pictures to the right: Brothers with the Tafolla MS band directors, San Antonio, TX)



Jump in and Join Your Campus

By: Josh Stickney - $\text{KK}\Psi$
University of Oklahoma/Delta Chapter
SWD Co Member-at-Large



Often, our chapters will fall victim to repeating the same 'ole involvement and service opportunities. While many of these activities are indeed worthwhile, I

would like to push our fraternity and sorority to expand their reaches and look for more opportunities on our own campuses. There are a vast number of untapped ways to showcase what your organization is on campus. Let's examine some ways to join your campus and get more involved.

Use your student government. Whether your university calls it SGA or something else, take advantage of the opportunities and resources

provided by your student body government. There are many things you can see if your SGA provides, including: student organization funding, leadership training, access to a university-wide calendar, free use of university facilities, rental of university assets, discounts to university food resources, and student organization advising. You elect your student government to represent and help your organization and they can be a valuable first step in becoming more involved at your school.

Get your name out there. While I have no doubt that you proudly wear your letters around campus that is not what I am addressing in this section. We want our fraternity and sorority to be recognized as organizations that can be depended and relied upon to serve our whole campus. Contact your Dean of Students, director of your school of music/fine arts, various college deans etc., and see if there are any ways that your chapter can aid them. The answer will likely be "Yes!", and your organization will become known as a proac-

tive leader in campus service.

Another resource could be your campus volunteerism and leadership organizations. Many colleges have official campus programs, however, if your university does not have a leadership and volunteering program, then I highly recommend reaching out to other service groups on campus. Together, groups can do more. Contact the chapter presidents of other groups on campus and see if you can start a joint service project. These contacts alone will serve as essential networking tools for your chapter in the future.

Make your campus aware. As servants to our college and university bands, we work for better bands, but we are essentially a student organization. Instead of staying secluded from other campus groups, join them, and stay involved in campus activities. Find out if your campus holds an involvement or student organization exploration fair. These are normally held at the beginning of the Fall/Spring semesters and would be a



Jump in and Join Your Campus Continued...

great way for others to just become aware of the existence of our great organizations. Your chapter should also look to participate in school-wide philanthropic and awareness events, such as Relay for Life, weeks of fundraising, homecoming events etc. The more your campus knows about our fraternity and so-

rority, the better equipped you are to serve your college bands at a higher level, the more your members can interact with other students on campus, the more your chapter can fulfill your creeds and edicts, and the more involved you will be as a student organization.

Do not be limited by your current chapter activities, but look to do more with your campus. We are all proud of our own chapter, but now it's time to do even more and help our schools. Don't see this as more or unnecessary service, but as an opportunity to network for YOUR fraternity and sorority.



"I See Band People:" Having Out of Chapter Experiences

By: Erika Pope - TBΣ
Henderson State University/ Theta Theta Chapter
SWD Counselor



Like many Tau Beta Sigma sisters around the nation, I am proud to say that I had a great experience being a sister within the chapter in which I was an active sister. I was fortunate to have a lot of great relationships with my fellow sisters of the Theta Theta Chapter. Truth be told, I can say that I am much closer to the people I went to college with than the people I went to high school with, primarily because we were altogether in close proximity whether in a dorm or an apartment complex and let's face it, band on the collegiate level is more of a job than an extracurricular activity, so there are times where you see your band family more than your own family; It's college, after all!

However, as good of an experience as I had within my home chapter,

my strongest bonds have been formed with people from other chapters and universities. I'm not sure my time in Tau Beta Sigma would have felt complete if I only had known the persons within my chapter. I don't think I could imagine my life without a Nicole Burdick (Sanchez), a Chris Foster or and Amanda Dickson and our bond would not have been possible, without stepping outside of our home chapters. For those of you who are members of chapters that don't get out much, I can imagine that some of you are reading this and many of the reasons on why you don't get out of your chapters have probably already streamed through your mind ("We live too far out from everything," "we're such a large chapter, we don't think we can relate to all the other chapters," "we can't afford it," "we have problems within our chapter that we need to fix," etc.). Though some of these reasons...or dare I say it...excuses...are somewhat valid, the benefits of getting to know other chapters far outweigh any excuse you can come up with on why you stick to your own campus.

During my time as your District Counselor, "road warrior," is a term that I have embraced and I now can definitely add that to the skills portion of my résumé! Though the roads have been long, the experi-

ence of visiting with chapters and getting to know them on a more personal level has been very gratifying. While I'm aware that this same level of pick up and go is a lot harder to accomplish while in school, breaking down the walls of your chapter and experiencing the world of Tau Beta Sigma outside of your campus can be accomplished in a number of ways, but the mindset to do so has to be there.

Of course there are events such as the District Chapter Leadership Conference, Spring Area Workshop and the grand finale to it all, our annual Southwest District Convention, but those are just the tip of the iceberg when it comes to having an out of chapter experience. With this being the age of speedy communication, Facebook, Twitter, Snapchat, Instagram, etc. can make all the difference, but also knowing your surroundings and what chapters are near you can be beneficial for the social aspect of it as well as for the service and support aspect. No matter how much you feel like the problems your chapter may be facing are custom made to your group, the fact of the matter is that in just the Southwest alone, we are a proud 36 Chapters, so there's bound to be another chapter that will understand your struggle.

This thing we do, that we are a part of is much bigger than ourselves and it only seems appropriate for the



Joint Relations

Continued...

reach of unity to match this. There's something special and a bit amazing to know that somewhere else within our District and the Nation, there's someone that knows what I know and

has experienced the things that I've experienced being in a college band and Tau Beta Sigma. It's the beauty of our sisterhood and a concept I encourage you all to embrace in the

coming school year!



Getting Involved

By: Allen Andrus II- ΚΚΨ
Howard Payne University/ Zeta Beta Chapter
SWD Vice-President



Being a part of Kappa Kappa Psi and Tau Beta Sigma, along with many other national organizations, offers us a unique chance to branch out. We have thousands of brothers and sisters all over the world. So, why do we find it difficult to get involved with our organizations? I will aid you in finding ways to involve your chapters in things outside of our university band activities.

Level 1 - University

As organizations that affiliate themselves with be university band specifically, it can be challenging to reach out to your fellow classmates who are not in our mu-

sical world. Some question the validity of involving themselves or their chapter on campus based on whether it is "service" or if it fits the purposes. In reality, if you take the time to put the name of Kappa

Kappa Psi and Tau Beta Sigma out to your campus, in good light of course, then you are creating an even bigger audience for your band. Establishing

great public relations (PR) between the band and your university follows directly beside the first purpose of both organizations. So, find an event where you can plug your chapter in. There are many different activities you can go for. You can create a band intramural team, have a booth at your campus-wide rush, hold a campus-wide fundraiser, participate in on-campus Greek life competitions, perform in your cafeteria, perform a recital, have a representative of your chapter attend student government meetings, etc. No matter how big or small, reaching out to your university and student life is a great step for your chapter and promotes the existence and welfare of your college bands.

Level 2 - Local

It is very safe to say that our local communities are crying out for service. We, as service minded organizations, can easily attach ourselves to a service project that outreaches to our community. Recently, I noticed a chapter within our district begin an ongoing com-

munity outreach project. They took the time to dirty up their jeans a little to help their fellow citizens. Not only does that create great PR for your band, it also creates a better sense of belonging for your chapter. You could volunteer at your local soup kitchen, do a community clean up project, habitat for humanity, Good Samaritan, donate to your food bank, etc. Whenever we see people in need, it is human nature to want to help them in some way.

The greatest way to become active in your local music community is through your local schools. Not many teachers will say no to a college student wanting to help their students. Take a few of your chapter members and do an instrument show and tell with an elementary music class, ask if you can attend and help a high school evening marching band rehearsal, offer private lessons to students who need help with ATSSB or TMEA audition material, make goodie bags for the students when they leave for contests, or host your own contest for local bands. The list can go on and on. For the most part, all you have to do is ask.

Level 3 - District

One of the best ways to keep from burning out on our organizations is to visit other chapters. There are hundreds of people in our organizations that live relatively close by. For some people in the SWD, visiting other chapters is a



Getting Involved Continued...

challenge. However, we live in a time where technology has remedied many hindrances. If you are a chapter who has not taken the time to talk to someone nearby, I challenge you to do so. At least once a semester, get out of your normal bubble and visit another school. Attend a ritual or a rush, have a joint chapter hangout time, play at one another's football games, host or attend a mixer with multiple chapters. These organizations are much larger than you, me, or just the school you attend. It is nationwide! Take advantage of the time you have. Make friendships within the brotherhood. You will not regret it.

The Southwest District hosts many events for you to become involved in. All you must do is come to them! Not only do these activities afford you the opportunity to further your relationships with fellow brothers and sisters, it also allows you to develop your leadership skills within the organization and your band. We have multiple area workshops, Chapter Leadership Conference, District Day, and District Convention. The main issue with attendance at most

of these events is travel or financial burdens. However, there are remedies for every situation. If you are unable to fund yourself or someone to represent your chapter at these events, your university does. Talk with your student government, student activities, or even your president to find ways that your university can fund your trip! These are educational and are made to benefit you and the university. Another great way to get involved is to apply for the multitude of awards and participate in the scrapbook each year. These are very easy to do and are a great way to create pride in the district and your chapter. All of this information can be found on the SWD website or you can contact a district officer.

Level 4 – Nation

As with level three, many of the options for you to become involved on this level are scripted and usually come at the same times each year. This gives you ample time to prepare for them! The largest event is National Convention. It occurs in the summer of every odd year, the next in 2015, and is a grand occasion.

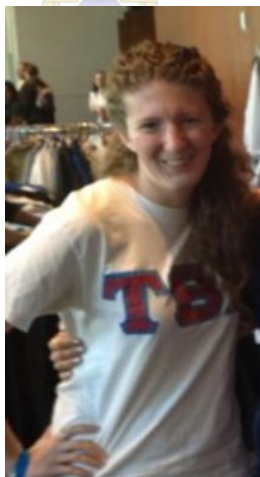
Travel is again a burden sometimes. I encourage you to do the same things state in the previous level. Search out other sources of financial support. Besides NatCon, you can audition for the National Intercollegiate Band, which is something I believe we should all do. To get the chance to participate in one of the best wind bands you will ever be a part something we should not pass up. Another great way to involve yourself nationally is to apply for scholarships and awards! There are a large number of awards presented each year and are just awaiting your application. It is all up to you.

I hope that you will take some of these tips and use them. Pass them to your chapter and get involved! Make your chapter name known, in a good way, to your school, community, district, and the nation. We can all reach for a higher goal. There is always a greater place than our current standing.



Serving More Than Just the Band

By: Meredith Crawford - TBΣ
Texas Christian University/ Beta Delta Chapter
SWD Vice President of Special Projects



Kappa Kappa Psi and Tau Beta Sigma might be the band service fraternity and sorority but we have the ability to go so much farther than just our bands. Obviously our love and passion for band is what connects us causing us to want to

serve our home bands but for

chapters to reach their full potential they need to go outside their schools.

Especially for marching season I know at my school we focus a majority of our attention to football games and serving the Horned Frog Marching Band but I have always felt like we are missing something. We are showing the band about our love and care through service but we are not impacting the community. Our message is not just about serving bands but about spreading the joy of music to everyone. You cannot get everything that Kappa

Kappa Psi and Tau Beta Sigma have to offer if you just stay within your school. You need to get out in the community and serve as many people as possible.

As many of you have heard the Southwest District Convention service project this year is donating items band items to Tennyson Middle School. You have all been donating letters of encouragement, instruments, method books, and so many other items! It has been amazing, but this is such a great example of how you can help outside your band. These middle school high school



Serving More Than Just the Band

Continued...

bands in your communities would love help as well. Spread the joy of what band has done for your life by going to these schools. Encourage your own chapter to start these projects in your own community.

Tau Beta Sigma's birthday is around this time of year, but instead of celebrating it have your chapter write birthday cards for people that do not normally get birthday cards. There

are so many charities that offer these opportunities and it would allow the Sisters to celebrate our birthday in a way that would follow our ideals. There are countless ways to serve by going outside band but still showing who we are. Many of us tend to forget because we get wrapped up in everyday life, homework, exams, and band activities. Band service always comes first, that is a given. We were created

for the band but a great way to service the band is by going outside the band and serving everyone we can. The more we help others the better reputation your band will get and encourage people to join which is the best gift you can give to the band.

MLITB



Service Outside of the Music Department

By: Austin Bordelon - ΚΚΨ
Louisiana State University/ Beta Gamma Chapter
SWD Co Member-at-Large



We know that service to the music department is very important; it's what we do. We know that through these service projects we are promoting and preserving music for future generations. However, we cannot forget that we are citizens of communities, and strengthening our communities is an initiative to which we can all contribute. Because communities are full of people with similar ideals and inter-

ests, it is not difficult to have a positive impact on our communities. Last semester, Beta Gamma partnered with our Sigma Alpha Iota chapter to hold a music book drive. Musicians and professors were very generous to our cause, and we were able to donate many books and instructional tools to schools within the Greater Baton Rouge Area.

It is also important to assist in community projects already in progress, because additional help is usually encouraged. Recently, we were approached by our campus' Relay for Life planning committee to form a team. As a chapter, we contemplated how our lives and the lives of our friends were affected by cancer, and we realized that this is an amazing opportunity for us to contribute to our community for the betterment of mankind. Many lives of our fellow band members have been affected by cancer, and

participation in Relay for Life would be another way show our band members that we care.

As brothers and sisters of fantastic organizations that contribute to the world of music, we should not feel constricted to service only for music. There's a whole world out there that needs assistance in some way. All you need to do is explore and take the chance. And don't forget to take pictures.



Andy the Armadillo Update



Hey Southwest! I've had a wonderful time here on the campus of Southeastern Oklahoma State University with Eta Nu. They've been such gracious hosts and I've had a blast. This semester alone I attended the Winter Council Meeting and the North Texas Area Workshop and I've helped with an All-District Honor Band event, Solo and Ensemble Contest, Super Saturday (Southeastern's Audition Day) and participated in their Second Degree all by the end of February! I will get to participate in a few more events before I leave including the MC Service Project, Third Degree and the wedding of two Alumni from the chapter. It's been really nice to see the chapter grow and watch how they hold a Membership Class. It won't be too long before I am off to another university but I will say that my stay with the Eta Nu chapter has been a great ride. I can't wait to see you all at District Convention in April!

-AEA
Andy the Armadillo



Southwest District Announcements



April 25-27, 2014
Baylor University
Waco, TX
Tau Beta Sigma Iota
Kappa Kappa Psi Beta Alpha

Official Convention Website –
www.swd2014.weebly.com – register before April 4th to not be assessed the late fee!!

All Kappa Kappa Psi paperwork HAS to be postmarked by **APRIL 11TH** (available on kkytbs.org/swd/resources)

Saturday is **ORANGE OUT** in honor of Dale Croston! The District Council will be selling orange out shirts for \$10

Saturday at 11:00 AM is the Conductor's forum! Come learn about what it takes to make beautiful music with students of all ages!

Conductors include

Christine Beason

Travis Cross

Amy Dauphanais

Rick Espinosa

Dawn Farmer

John Graham

Jack Lee

Reading Band will have standard ensemble numbers that are first come first serve! If you want to be involved with reading band and have the directors in the conductor's forum lead you in music, register now! Everyone who will be involved will be contacted by a member of council prior to convention so that we can confirm your involvement and get an alternate person involved if needed

Auxiliary workshop – Practice Flags will be provided, but if you wanted to use other auxiliary items, you will need to bring your own (sabers, rifles, etc).

Sunday Funday!

We're going to get out and get our blood moving together to finish out convention strong! Sunday April 27th at 7:00 AM

Those who are walkers/runners can join a few council members on the Baylor Bear Trail which is 2.25 miles!

For those who aren't interested in running/walking in a circle, we are also offering Zumba on Sunday morning which will be lead byCarolynn McCambridge, current Tau Beta Sigma Board of Trustees member

SWD Webmaster

The SWD Council is currently taking applications for a webmaster! The deadline is **April 11th**. We are looking for someone who can keep up with our district website, and work alongside our TBS VPSP and KKY Co-M@Ls to help publish and create The New Alto. Applications can be found at www.kkytbs.org/swd under "resources".

Please direct any and all questions to the District Presidents, or you may also contact Alex Johnson, the current SWD Webmaster to learn more about the position.

- Kappa Kappa Psi is currently taking submissions for the District Scrapbook. Send your best pictures of your chapter to Austin Bordelon at SWD-CoMal2@kkpsi.org by **April 12th**

Fundraiser

On Saturday of Convention, we will feature an "Orange Out" day in honor of Dale Croston. We will be selling shirts at convention to commemorate Dale. All profits of the t-shirt sales will be donated to two causes important to Dale and his family. Please direct any questions you may have about this fundraiser to Stephanie McCullough SWDsec-Treas@kkpsi.org and Emily Murphree at SWDsec_trea@tbsigma.org

Service

Donate your musical supplies and write encouraging notes to the Tenyson Middle School Band in Waco, TX. We will be collecting donations and notes at every Area Workshop and District Convention.

The university/chapter with the most participation will receive a VIP table for banquet at convention! Please direct any questions you may have about this service project to Josh Stickney swd-comal1@kkpsi.org and Meridith Crawford swdvpssp@tbsigma.org

**From the Brothers and Sisters of
Zeta Kappa and Epsilon Beta**



From beautiful skies . . .to the blackest storms . . . we remain together as one.

AEA & ITB